

Model:CZL201

Capacity:1t-50t

FEATURES:

Alloy steel structure (40CrNiMoA); Simple structure; Glue sealing.

APPLICATIONS:

Hopper scales, automobile examination line, railroad scales.

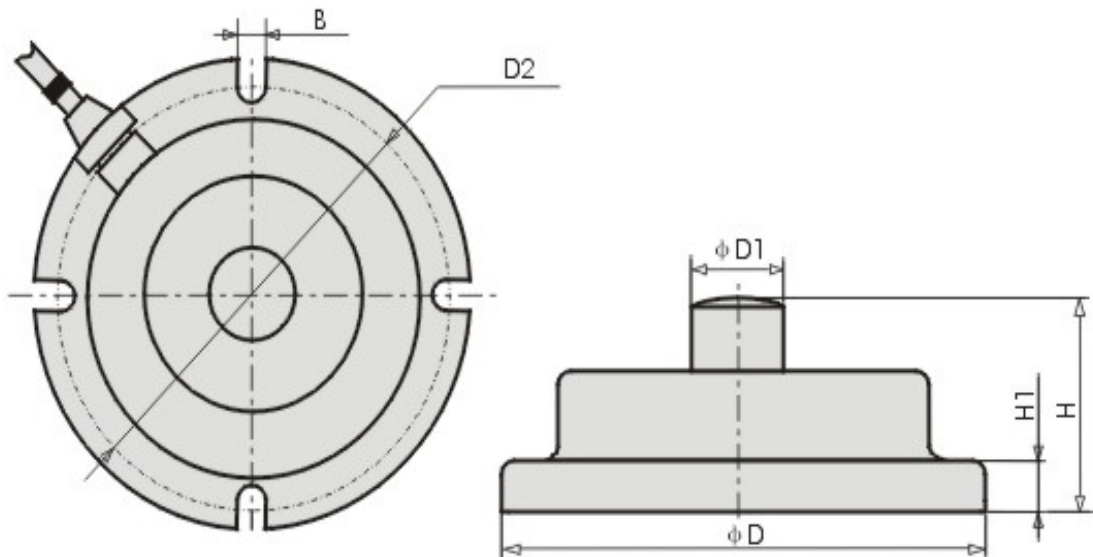


LOAD INSTRUCTION:



DIMENSIONS(mm):

Size: ΦD , H Thread hole: N/A



Load(t)	1	2	3~5	10	15	20	30	50
D	115	120	128	158	194	220	230	264
D1	20	20	20	40	42	44	48	52
D2	99	104	114	140	170	196	206	240
H	36	38	46	63	68	73	78	90
H1	8	8	8	15	20	22	25	30
B	8.4	8.4	10.4	10.4	12.4	12.4	12.4	12.4

PARAMETERS:

Precision: 0.05%F.S	Insulation resistance: $\geq 5000\text{M}\Omega(100\text{VDC})$
Rated output: $2\pm 0.01\text{mv/v}$	Excitation voltage: 9~12VDC
Non-linearity: 0.03%F.S	Compensated temp.range: -10~+40°C
Hysteresis: 0.03%F.S	Use temp.range: -20~+55°C
Repeat: 0.02%F.S	Temp.effect on zero: 0.03F.S/10°C
Creep: 0.02%F.S/10min	Temp.effect on span: 0.02F.S/10°C
Zero balance: $\pm 1\%F.S$	Safe overload: 150%
Input resistance: $700\pm 10\Omega$	Ultimate overload: 200%
Output resistance: $700\pm 5\Omega$	Defend grade: IP66
Connection Method: Red + (Input +) Black - (Input -)	White - (Output -) Green + (Output +)
Cable: $\varnothing 6$ x5 meters or 10 meters	

