

## Features

- Low Loss
- Low Ripple
- Small Size

## Description

Surface mount, Silver (Ag) coated barium ceramic filter. Developed for use in W-CDMA infrastructure applications.

Weight: 0.6 grams typical

Material: Filter is composed of a ceramic block plated with Ag.

Filter complies with RoHS standards.



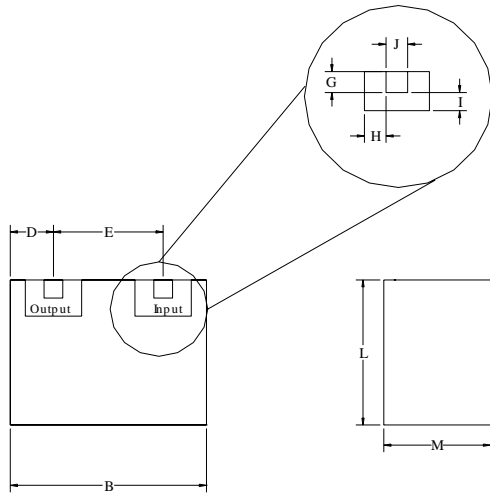
## Electrical Specifications

Parameter	Frequency (MHz)	Typical @ 25°C	Spec. over -40°C to +85°C
Passband Insertion Loss	2110 - 2170	1.3 dB	3.0 dB max
Passband Return Loss @ input	2110 - 2170	14.0 dB	10.0 dB min
Passband Ripple	2110 - 2170	.5 dB	1.0 dB max
Attenuation:	1800	36.0 dB	30.0 dB min
	1980	56.0 dB	22.0 dB min
	2300	35.0 dB	25.0 dB min
Power into any port		1 Watt max	

Note: Supplier shall test each filter to the critical electrical specifications of the above table. Any subsequent audits may deviate from in value due to measurement repeatability among different test systems. Such deviations shall not exceed the following limits:

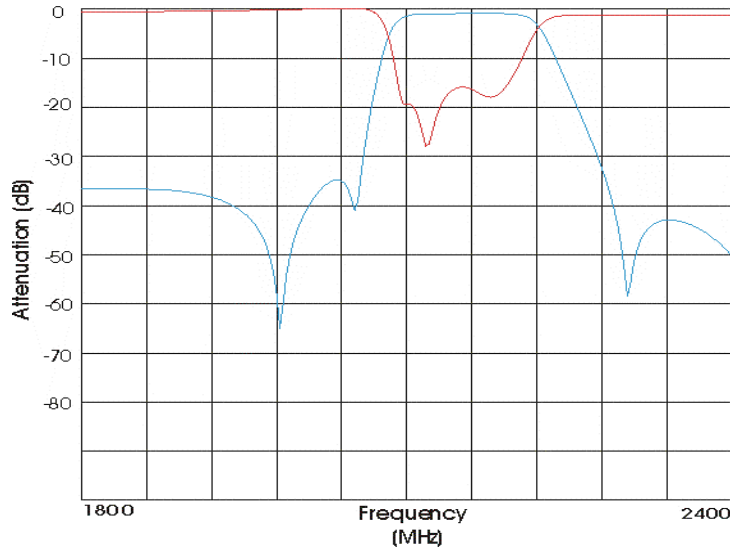
Specification Allowance	
Insertion Loss	0.1 dB
Return Loss	1.0 dB
Stopbands	1.0 dB

### Mechanical Drawing

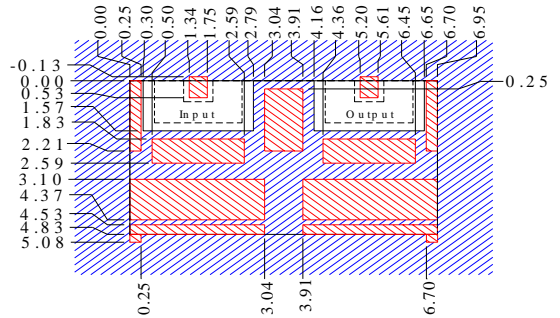


Dim	Nominal (mm)	Tolerance (mm) +/- or max
A		
B	7.05	max
C		
D	1.55	0.25
E	3.86	0.13
F		
G	0.66	0.13
H	0.66	0.13
I	0.66	0.13
J	0.66	0.13
K		
L	5.03	max
M	3.93	max

### Electrical response



### PCB Layout

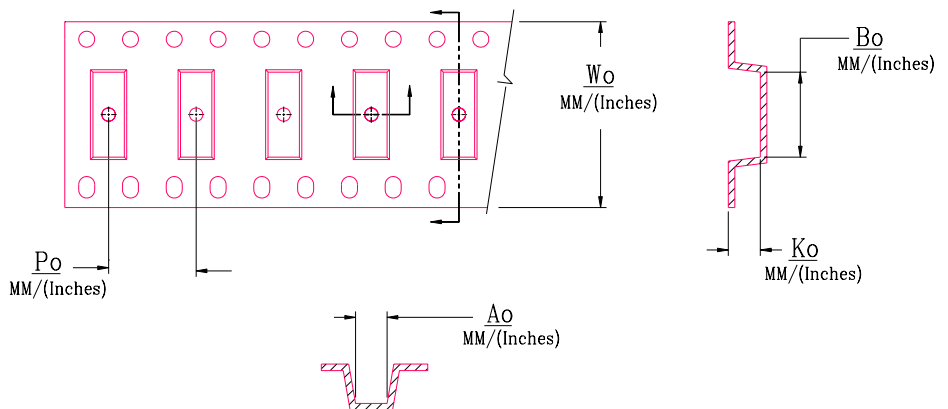
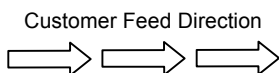


Dimensions are in mm. Tolerance = +/- 0.13

- Filter Outline
- Exposed Conductor
- Solder Resist Over Conductor
- Solder Resist Over Dielectric

### Packaging and Marking

DIMENSION	UNITS	SPECIFICATION
REEL DIAMETER	mm	330
REEL WEIGHT	kg	1.5
REEL QUANTITY	ea.	1000



CTS  
110  
YWW

MODEL NO.	$W_o$	$A_o$	$B_o$	$K_o$	$P_o$
CER0110	16.0/(0.630)	5.46/(215)	7.49/(0.295)	4.45/(0.175)	8.0/(0.315)