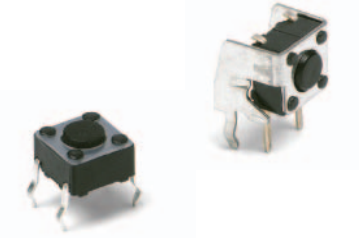


PTS645 Series 6 mm Tact Switches



Features/Benefits

- Compact size 6 x 6 mm
- Variety of actuator lengths
- Choice of actuation force
- RoHS compliant and compatible

Typical Applications

- Consumer products
- Instrumentation
- Computer products
- Industrial

Specification

FUNCTION: Momentary action
CONTACT ARRANGEMENT: SPST, N.O.
TERMINALS: PC pins

Mechanical

ACTUATION FORCE: 130 grams, 160 grams, 200 grams, 260 grams
LIFE EXPECTANCY: 100,000 operations.

Electrical

CONTACT RATING: 50 mA @ 12 V DC.
DIELECTRIC STRENGTH: 250 V AC min.
CONTACT RESISTANCE: 100 mΩ max. initial.
INSULATION RESISTANCE: 10¹¹ Ω min.

Environmental

OPERATING TEMPERATURE: -20°C to 60°C

Process

SOLDERING: Preheating to 100°C for 45 sec. max. Keep flux flush with top surface of PCB; do not apply to component side of PCB and area where terminals are located. Soldering to 255°C for 5 sec. max. Clean by brushing on solder surface. Do not clean switch with solvents.

Packaging

Bulk packaging.

Tape & reel for the SMT type:

Reels of 1,000 pieces for 4,3 and 5,0 mm height
Reels of 700 pieces for 7,0 mm height
Reels of 500 pieces for 9,5 mm height
Reels of 400 pieces for 13,0 mm height

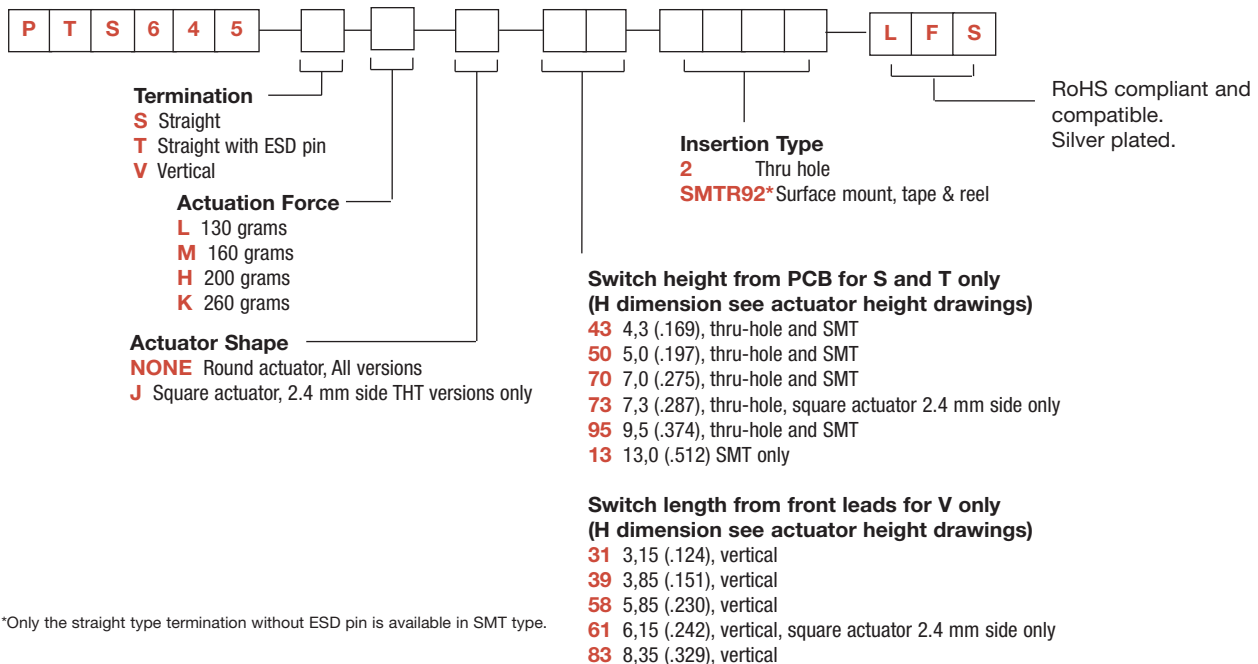
NOTE: Specifications listed above are for switches with standard options.
For information on specific and custom switches, consult Customer Service Center.

B

Tactile Switches

How To Order

Our easy build-a-switch concept allows you to mix and match options to create the switch you need. To order, select desired option from each category and place it in the appropriate box.



*Only the straight type termination without ESD pin is available in SMT type.



17 dec 14

B-89

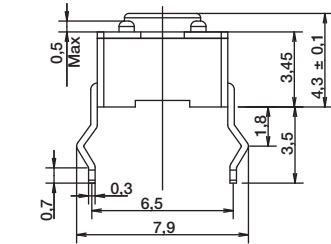
Dimensions are shown: mm
Specifications and dimensions subject to change

www.ck-components.com

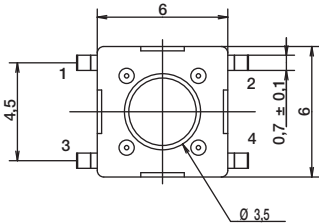
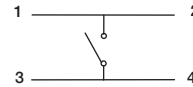
PTS645 Series 6 mm Tact Switches

TERMINATION

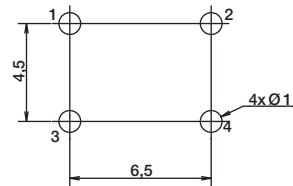
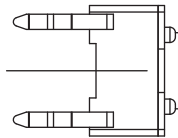
S STRAIGHT



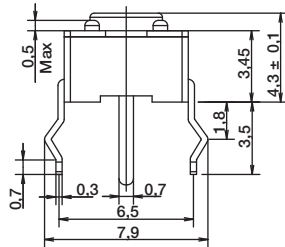
SCHEMATIC



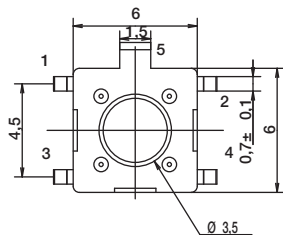
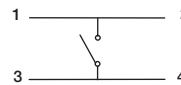
PCB LAYOUT



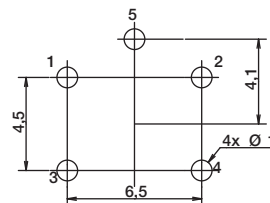
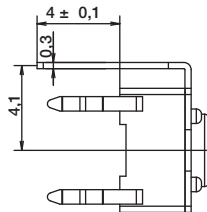
T STRAIGHT WITH ESD PIN



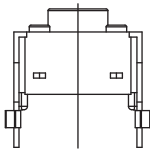
SCHEMATIC



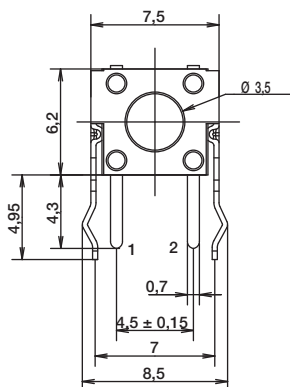
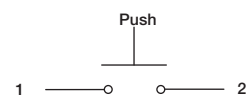
PCB LAYOUT



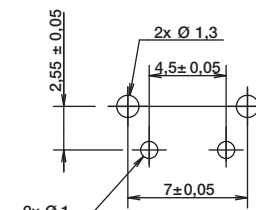
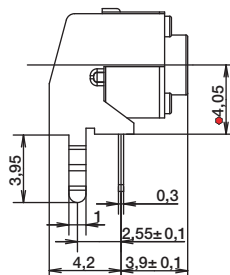
V VERTICAL



SCHEMATIC



PCB LAYOUT



First Angle
Projection

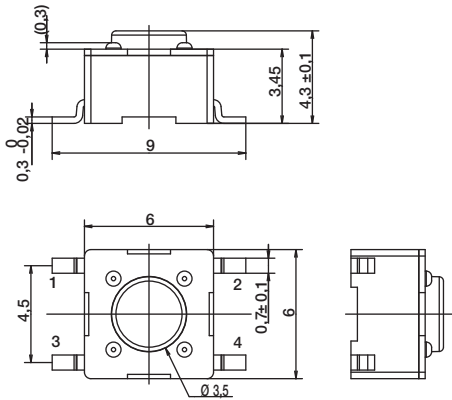


PTS645 Series 6 mm Tact Switches

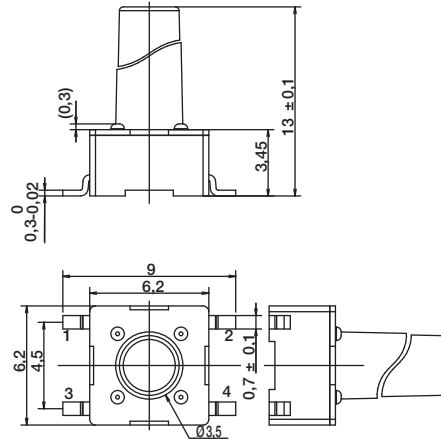
TERMINATION

SMT

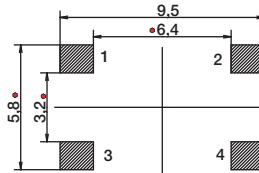
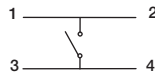
FOR 4.3, 5.0, 7.0, 9.5 MM HEIGHT



13.0 MM HEIGHT ONLY

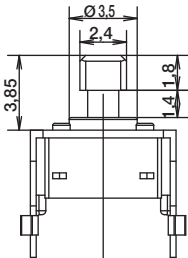


SCHEMATIC



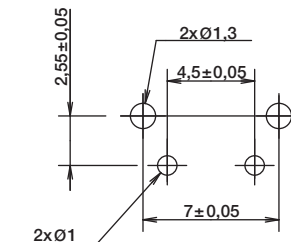
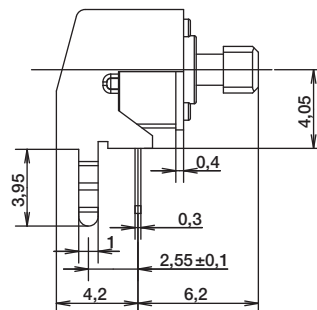
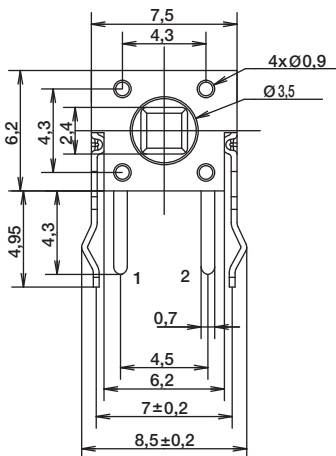
PCB LAYOUT

ACTUATOR SHAPE



SCHEMATIC

Push



RECOMMENDED PCB LAYOUT



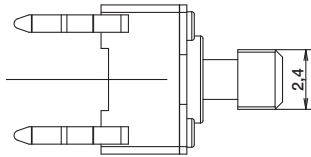
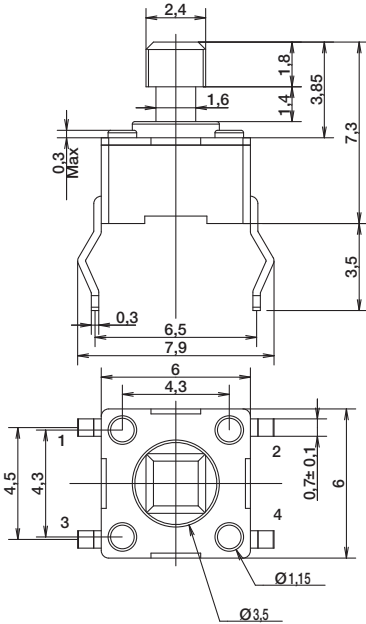
First Angle
Projection

PTS645 Series 6 mm Tact Switches

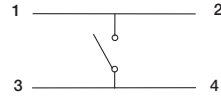
ACTUATOR SHAPE

B

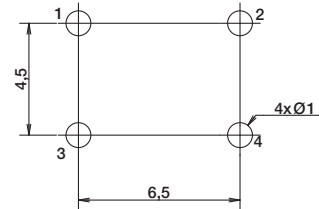
Tactile Switches



SCHMATIC



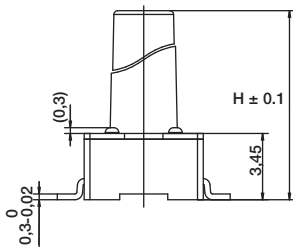
RECOMMENDED PCB LAYOUT



ACTUATION FORCE

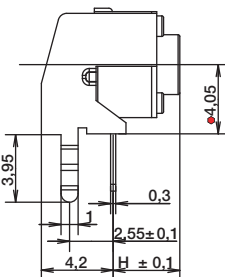
OPTION CODE	FORCE
L	130 grams Black
M	160 grams Blue
H	200 grams Gray
K	260 grams Red

ACTUATOR HEIGHT



Switch height from PCB for S and T only

OPTION CODE	DIMENSION H	TERMINATION	SCHEMATIC	
			Without EMC pin	With EMC pin
43	4,3 (.169)	Thru-hole and SMT		
50	5,0 (.197)	Thru-hole and SMT		
70	7,0 (.275)	Thru-hole and SMT		
95	9,5 (.374)	Thru-hole and SMT		
13	13,0 (.512)	SMT		

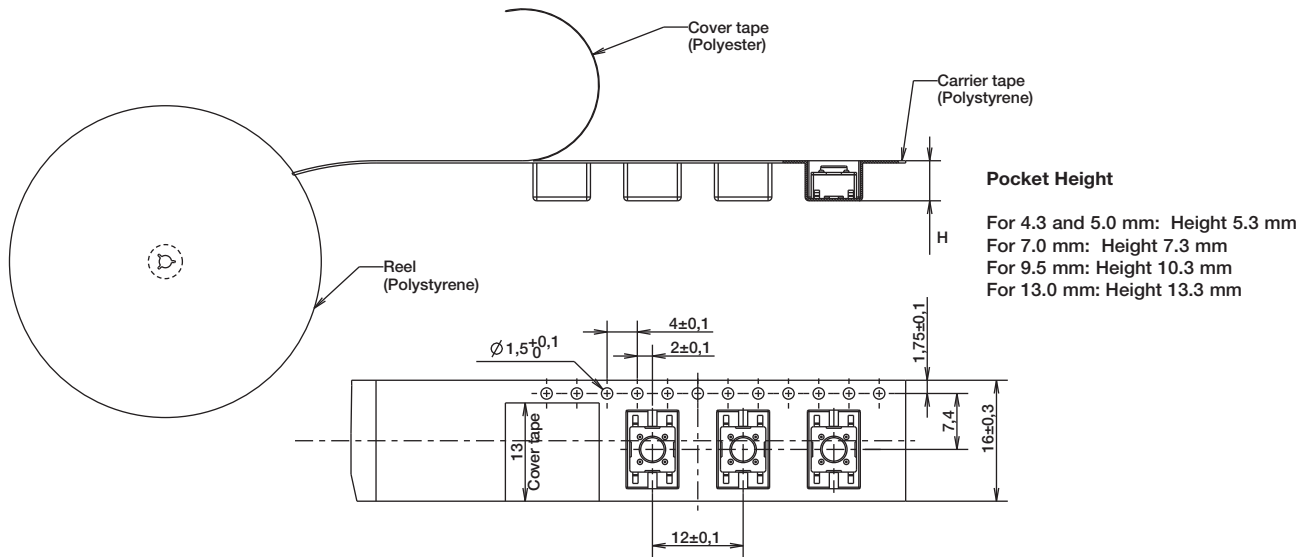


Switch length from front leads for V only

OPTION CODE	DIMENSION H	TERMINATION	SCHEMATIC	
			Without EMC pin	With EMC pin
31	3,15 (.124)	Vertical		
39	3,85 (.151)	Vertical		
58	5,85 (.230)	Vertical		
83	8,35 (.329)	Vertical		

PTS645 Series 6 mm Tact Switches

TAPE & REEL



Tactile Switches

Mouser Electronics

Authorized Distributor

Click to View Pricing, Inventory, Delivery & Lifecycle Information:

C&K Components:

[PTS645SL95](#) [PTS645SL43](#) [PTS645SL70](#) [PTS645SL50](#) [PTS645SH43](#) [PTS645SH70](#) [PTS645SH95](#) [PTS645SH50](#)
[PTS645SL43SM](#) [PTS645TJL73](#) [PTS645SJL73](#) [PTS645TH43](#) [PTS645TH50](#) [PTS645TH95](#) [PTS645TH70](#)
[PTS645VL83](#) [PTS645VL31](#) [PTS645VL15](#) [PTS645VL58](#) [PTS645VL39](#) [PTS645SH43SM](#) [PTS645TL95](#) [PTS645TL70](#)
[PTS645TL43](#) [PTS645TL50](#) [PTS645VH39](#) [PTS645VH83](#) [PTS645VH15](#) [PTS645VH58](#) [PTS645VH31](#)
[PTS645SM43SMTR LFS](#) [PTS645SH70 LFS](#) [PTS645VL39 LFS](#) [PTS645VL31 LFS](#) [PTS645SL50 LFS](#) [PTS645SJL73](#)
[LFS](#) [PTS645SM43TR LFS](#) [PTS645VH58 LFS](#) [PTS645VL58 LFS](#) [PTS645VL83 LFS](#) [PTS645TL43 LFS](#)
[PTS645VH15 LFS](#) [PTS645VH83 LFS](#) [PTS645SK50TR LFS](#) [PTS645SL70TR LFS](#) [PTS645SM50TR LFS](#)
[PTS645SH95 LFS](#) [PTS645SK43 LFS](#) [PTS645TL70 LFS](#) [PTS645SL70 LFS](#) [PTS645VH39 LFS](#) [PTS645TL50 LFS](#)
[PTS645SH50 LFS](#) [PTS645VL15 LFS](#) [PTS645SK50 LFS](#) [PTS645TH50 LFS](#) [PTS645VH31 LFS](#) [PTS645SK43TR LFS](#)
[PTS645SL50SMTR LFS](#) [PTS645SJH73 LFS](#) [PTS645TH43 LFS](#) [PTS645SL43 LFS](#) [PTS645SH43SMTR LFS](#)
[PTS645SK95 LFS](#) [PTS645SL95 LFS](#) [PTS645VJL61 LFS](#) [PTS645VK39 LFS](#) [PTS645SL17LFS](#) [PTS645SM43LFS](#)
[PTS645SM50LFS](#) [PTS645SM70LFS](#) [PTS645SM95LFS](#) [PTS645SH43LFS](#) [PTS645SK70LFS](#) [PTS645TM43LFS](#)
[PTS645TM50LFS](#) [PTS645TM70LFS](#) [PTS645TM95LFS](#) [PTS645TH95LFS](#) [PTS645TK43LFS](#) [PTS645TK50LFS](#)
[PTS645TK70LFS](#) [PTS645TK95LFS](#) [PTS645VM15LFS](#) [PTS645VM31LFS](#) [PTS645VM39LFS](#) [PTS645VM58LFS](#)
[PTS645VM83LFS](#) [PTS645VK15LFS](#) [PTS645VK31LFS](#) [PTS645VK58LFS](#) [PTS645VK83LFS](#) [PTS645SL43SMTRLFS](#)
[PTS645SM50SMTRLFS](#) [PTS645SH50SMTRLFS](#) [PTS645SK43SMTRLFS](#) [PTS645SK50SMTRLFS](#)
[PTS645SJM73LFS](#) [PTS645SJK73LFS](#) [PTS645VJM61LFS](#)