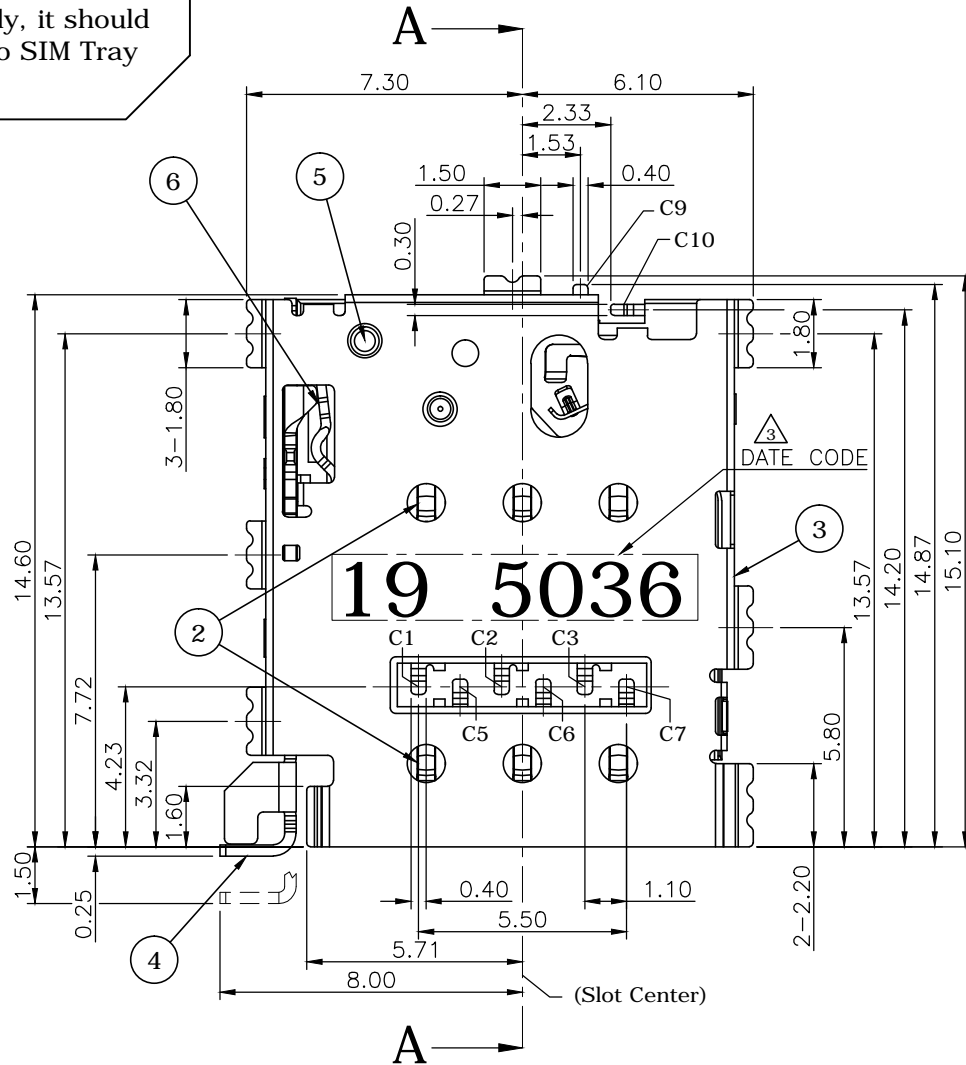
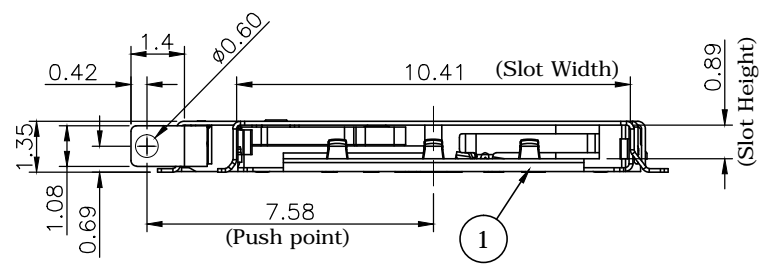
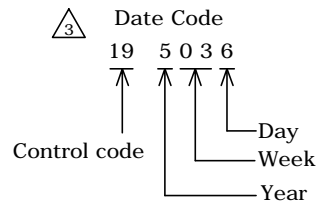


This part is a connector only, it should be used together with Nano SIM Tray (PN: 115S-ACA1)

0.51 Max



Section A-A



REV.	DESCRIPTION	DRAWN	DATE
1	INITIAL RELEASE	FROS	2015/07/01
2	Add notes, dims of carrier tape	FROS	2016/01/18
3	Revised date code spec.	FROS	2016/11/07

SPECIFICATION:

1. ELECTRICAL
 - 1.1 Current Rating: 0.2A max.
 - 1.2 Voltage Rating: 10VAC/DC
 - 1.3 Contact Resistance: 50mΩ
 - 1.4 Insulation Resistance: 1000MΩ
 - 1.5 Dielectric Withstanding Voltage: 500VAC

2. MECHANICAL
 - 2.1 Durability: 2,000 Cycles
 - 2.2 Tray Insertion Force: 20N max.
 - 2.3 Tray Extraction Force: 3N min.
 - 2.4 Contact Normal Force: 40gf min. per pin

3. ENVIRONMENTAL
 - 3.1 Operating temperature range: -30°C~+85°C
 - 3.2 Storage temperature range: -40°C~+85°C

4. SOLDER ABILITY
 - 4.1 Recommended IR Reflow(Wave Soldering) Temperature: 260°C

6	Latch	SUS301-H, 0.25T
5	Cam	SUS301-1/2H, 0.5T
4	Lever	SUS301-H, 0.3T
3	Shell	SUS301-H, 0.1T, Tail area: 0.8u" Au min. Under-plated: 50u" Ni min.
2	Contact	MKT322-ESH, 0.1T, Contact area: 8u" Au Min. Tail area: 0.8u" Au min., Under-plated: 40u" Ni min.
1	Insulator	LCP S475+30%GF, UL94V-0, Black
NO.	PART NAME	DESCRIPTION

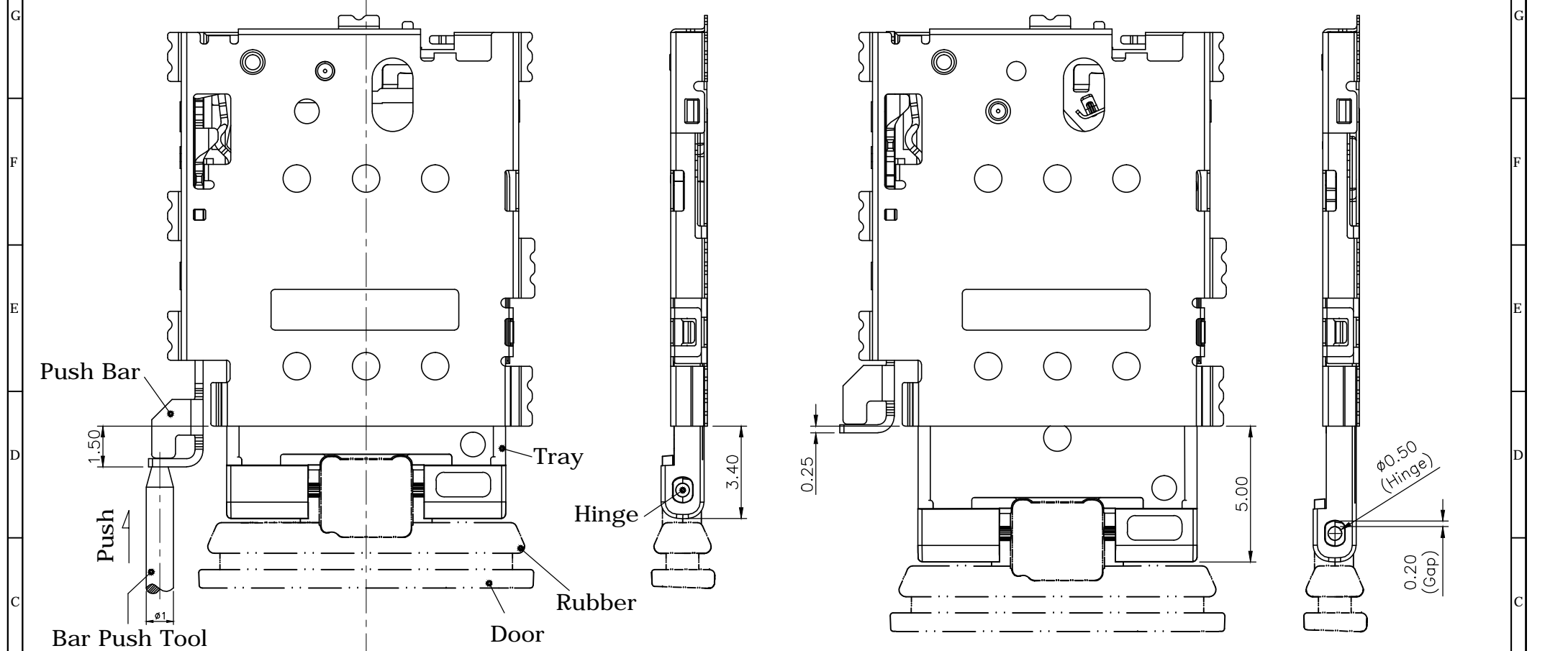
UNLESS OTHERWISE SPECIFIED TOLERANCE			
UNIT:	DECIMAL	LINEAR	ANGLES
mm	X.	±0.50	±5°
	X.X	±0.25	±3°
	X.XX	±0.12	±1°



WWW.ATTEND.COM.TW

DRAWN	Fros	2015/07/01	DRAWN NAME:	Nano SIM Socket, Top Mount, Eject Type, H1.35, Combination With Tray	
CHECKED	Zola	2015/07/01	PRODUCT NO.	115S-ACA0	
APPROVED	Ken	2015/07/01	FILE NAME	115S-ACA0_B_3	
SCALE	5/1	SHEET	1/4	SIZE	A4

REV.	DESCRIPTION	DRAWN	DATE
	see sheet one		




Tray ejection dimension drawing

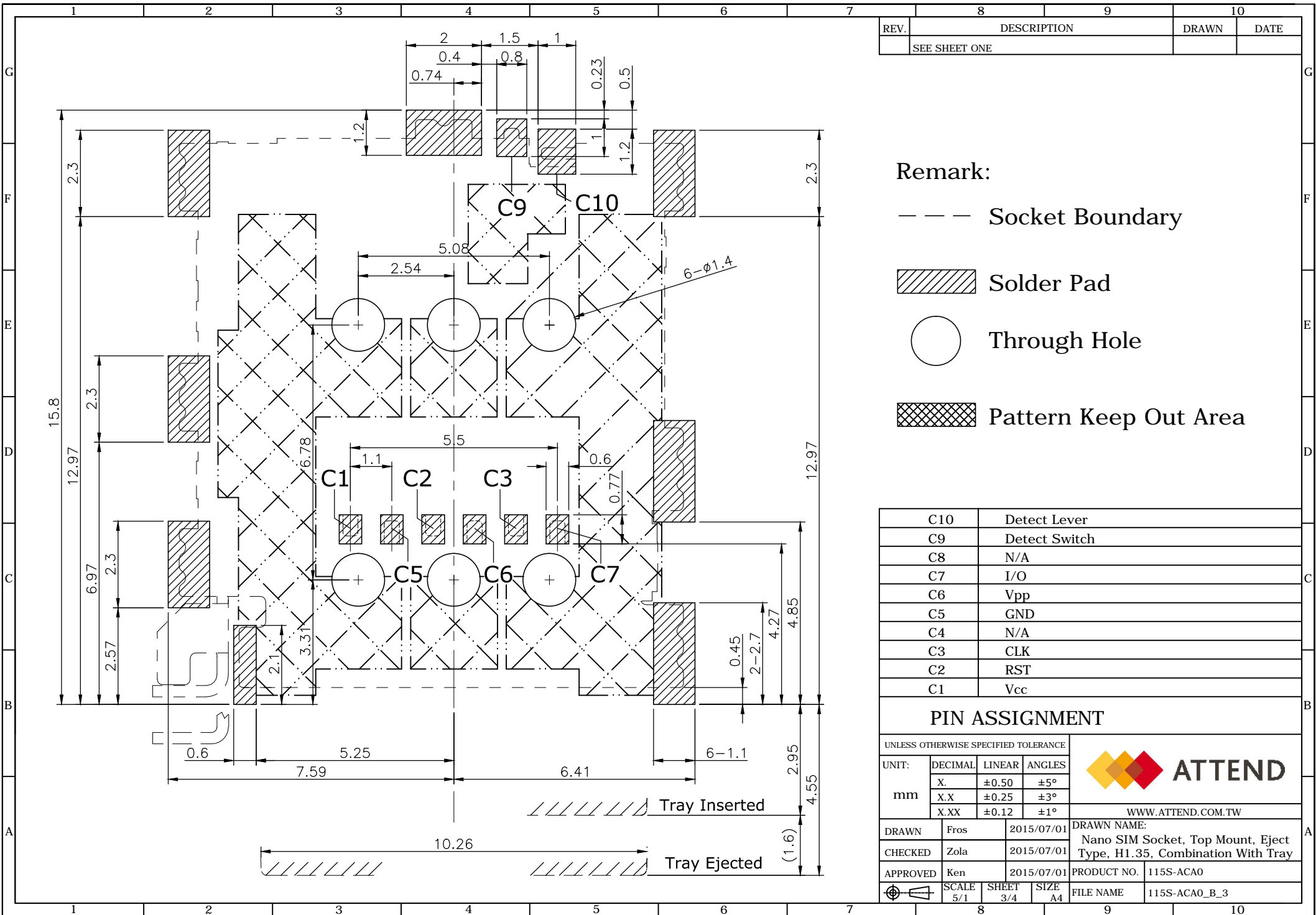
Tray insertion dimension drawing

Part description
Hinge, rubber and door are made and assembled by the client

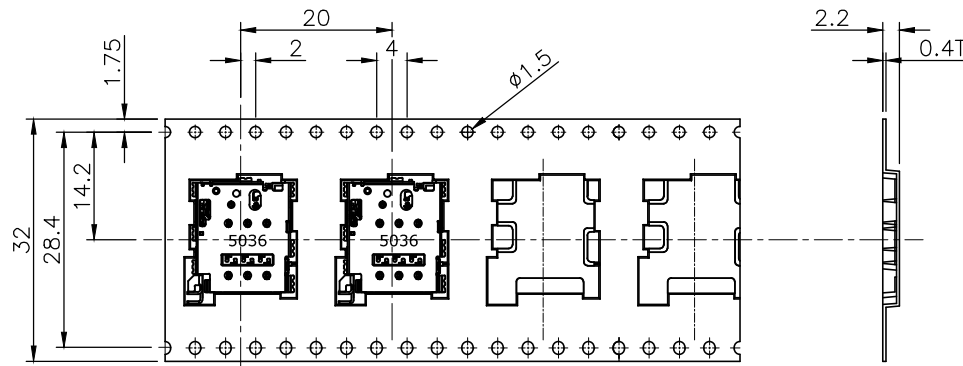
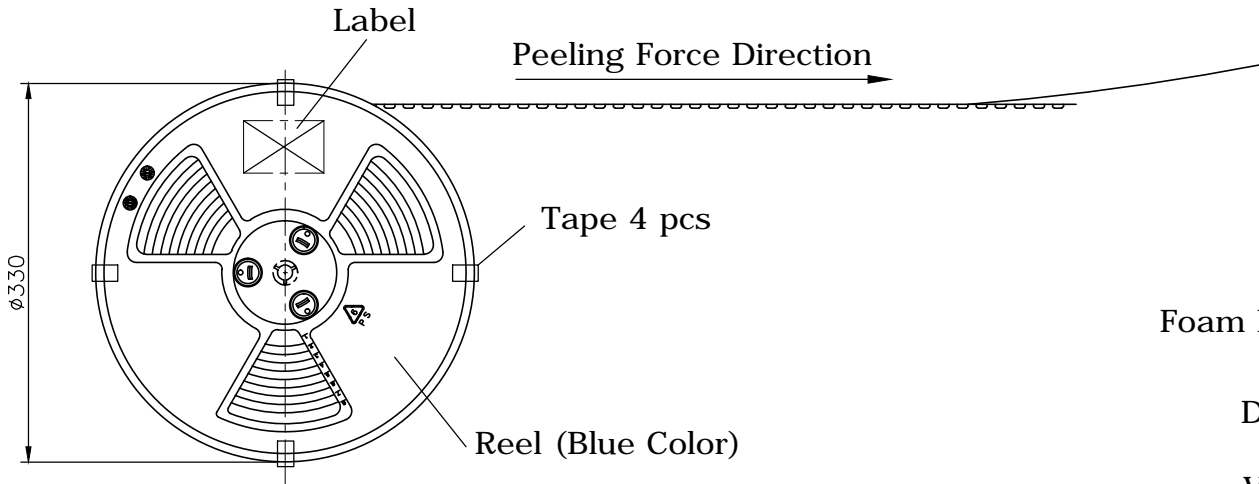
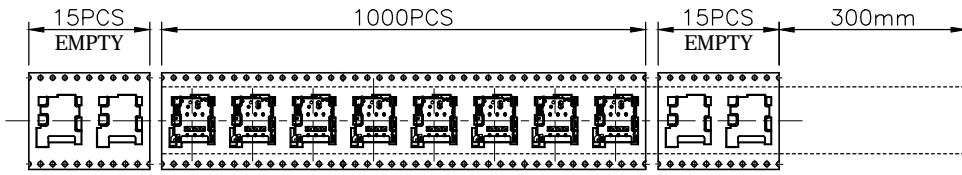
- Hinge: The connection between tray and door
- Rubber: Waterproof function
- Door: Design by the client
- Bar Push Tool: Design by the client

Tray ejecting types notes:
1. Pull out the door/ tray directly
2. Push the BAR PUSH linkage mechanism

UNLESS OTHERWISE SPECIFIED TOLERANCE					
UNIT:	DECIMAL	LINEAR	ANGLES		
mm	X.	±0.50	±5°	WWW.ATTEND.COM.TW	
	X.X	±0.25	±3°		
	X.XX	±0.12	±1°		
DRAWN	Fros	2015/07/01	DRAWN NAME: Nano SIM Socket, Top Mount, Eject Type, H1.35, Combination With Tray		
CHECKED	Zola	2015/07/01	PRODUCT NO. 115S-ACA0		
APPROVED	Ken	2015/07/01	FILE NAME 115S-ACA0_B_3		
SCALE 5/1		SHEET 2/4	SIZE A4		



REV.	DESCRIPTION	DRAWN	DATE
	SEE SHEET ONE		



CARRIER TAPE

PACKAGING SPECIFICATION:

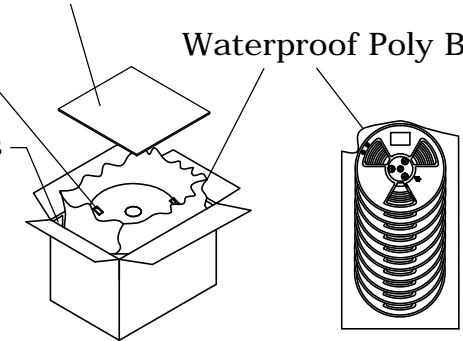
1. MATERIAL
 - 1.1 Embossed Carrier Tape: PS Black
 - 1.2 Top Cover Tape: PET
20-130g(Peel Speed 300mm/Minute)
Peeling angle: 165° to 180°
 - 1.3 Taping Reel: Plastic
2. PACKING
 - 2.1 Quantity:
1,000Piece/ Reel
9 Reel (9,000Piece)/ Carton

Foam Rubber Cushion 2pcs

Desiccant 2pcs

Vold Filler 4pcs

Waterproof Poly Bag



Cartion: 340*W340*H355

Total 9 Reels

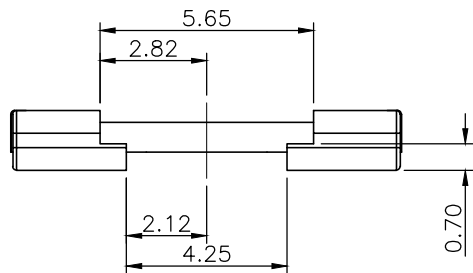
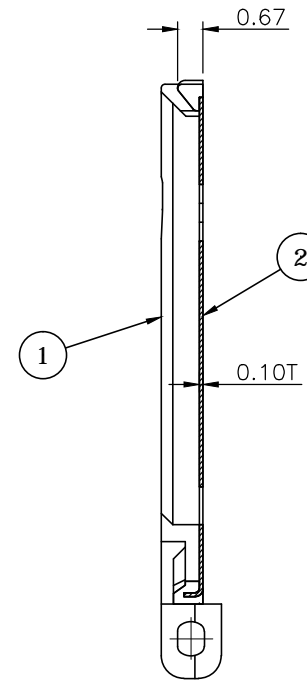
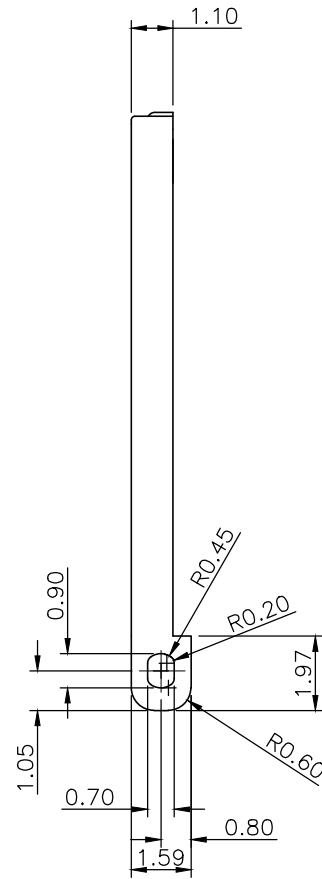
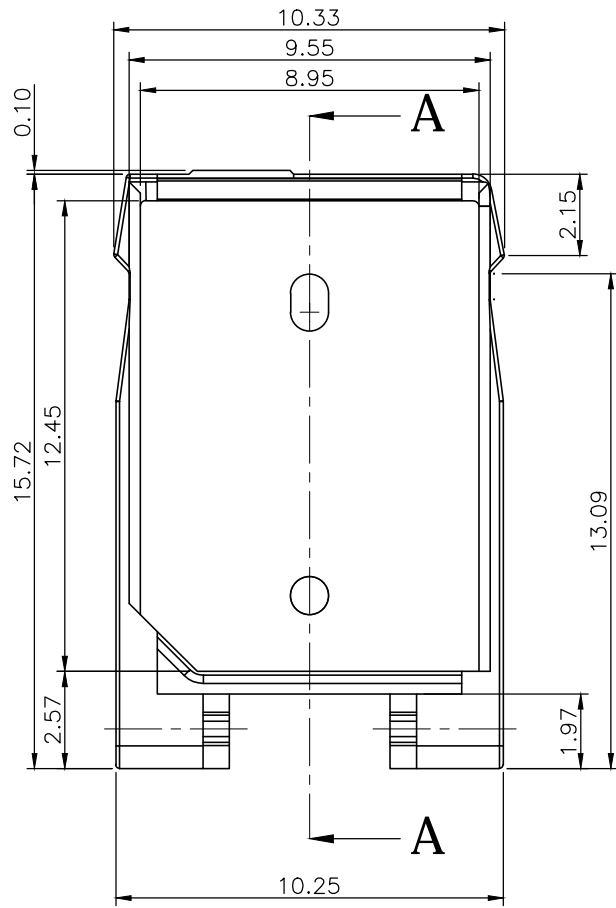
UNLESS OTHERWISE SPECIFIED TOLERANCE			
UNIT:	DECIMAL	LINEAR	ANGLES
mm	X.	±0.50	±5°
	X.X	±0.25	±3°
	X.XX	±0.12	±1°



WWW.ATTEND.COM.TW

DRAWN	Fros	2015/07/01	DRAWN NAME:	
CHECKED	Zola	2015/07/01	Nano SIM Socket, Top Mount, Eject Type, H1.35, Combination With Tray	
APPROVED	Ken	2015/07/01	PRODUCT NO.	115S-ACA0
	SCALE	SHEET	SIZE	FILE NAME
	N/A	4/4	A4	115S-ACA0_B_3

REV.	DESCRIPTION	DRAWN	DATE
1	INITIAL RELEASE	FROS	2015/07/01



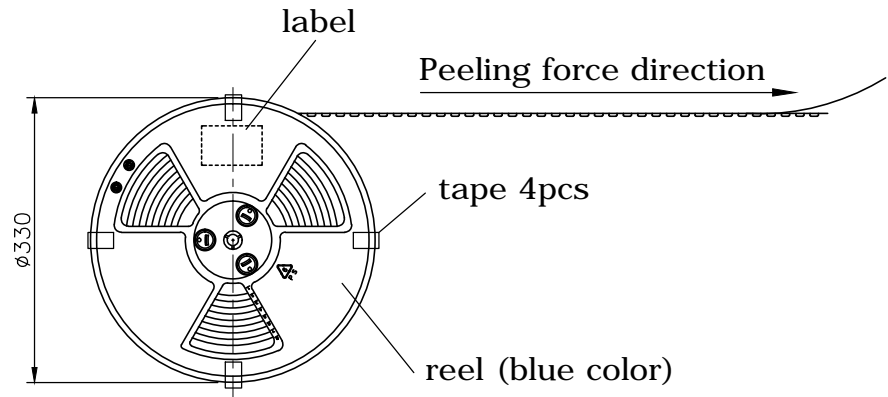
Section A-A

2	COVER	SUS301-H, 0.1T							
1	HOUSING	PA46_TW241F3 PA+ 15%GF, WHITE							
NO.	PART NAME	DESCRIPTION							
UNLESS OTHERWISE SPECIFIED TOLERANCE									
UNIT:	DECIMAL	LINEAR	ANGLES						
mm	X.	±0.50	±5°						
	X.X	±0.25	±3°						
	X.XX	±0.12	±1°						
DRAWN			Fros	2015/07/01	DRAWN NAME: Nano SIM Tray				
CHECKED			Zola	2015/07/01					
APPROVED			Ken	2015/07/01	PRODUCT NO. 115S-ACA1				
SCALE			5/1	SHEET	1/2	SIZE	A4	FILE NAME	115S-ACA1_B_1



WWW.ATTEND.COM.TW

REV.	DESCRIPTION	DRAWN	DATE
	see sheet one		



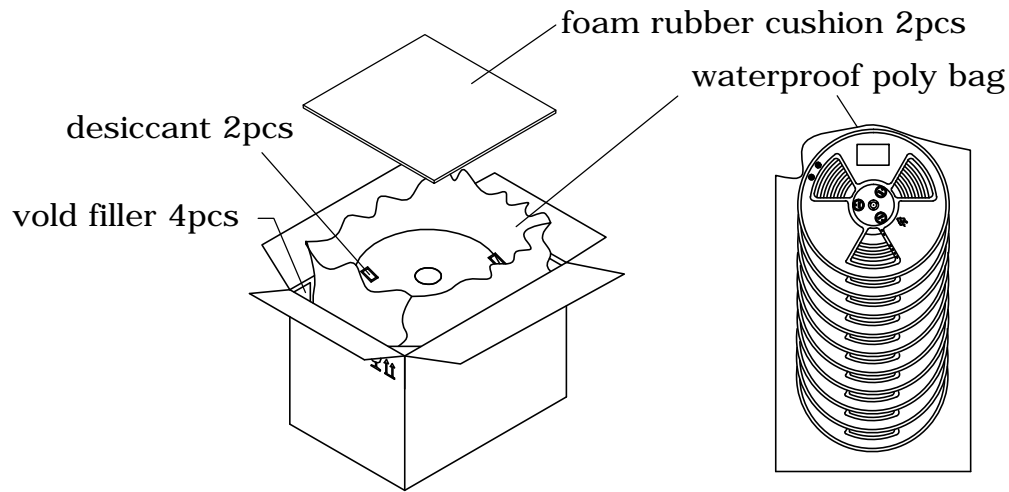
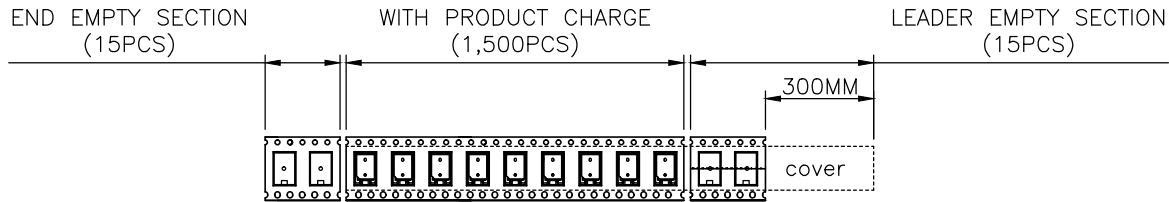
PACKAGING SPECIFICATION:

1. MATERIAL

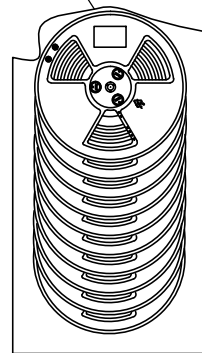
- 1.1 Embossed Carrier Tape: PS Black
- 1.2 Top Cover Tape: PET
20-130g (Peel Speed 300mm/Minute)
Peeling angle: 165° to 180°
- 1.3 Taping Reel: Plastic

2. PACKING


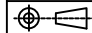
- 2.1 Quantity:
1,500 Piece / Reel
9 Reel (13,500 Piece) / Carton



Cartion: 340*W340*H355



total 9 reels

UNLESS OTHERWISE SPECIFIED TOLERANCE				 WWW.ATTEND.COM.TW	
UNIT:	DECIMAL	LINEAR	ANGLES		
mm	X.	±0.50	±5°		
	X.X	±0.25	±3°		
	X.XX	±0.12	±1°		
DRAWN	Fros	2015/07/01	DRAWN NAME:		
CHECKED	Zola	2015/07/01	Nano SIM Tray		
APPROVED	Ken	2015/07/01	PRODUCT NO.	115S-ACA1	
	SCALE N/A	SHEET 2/2	SIZE A4	FILE NAME	115S-ACA1_B_1