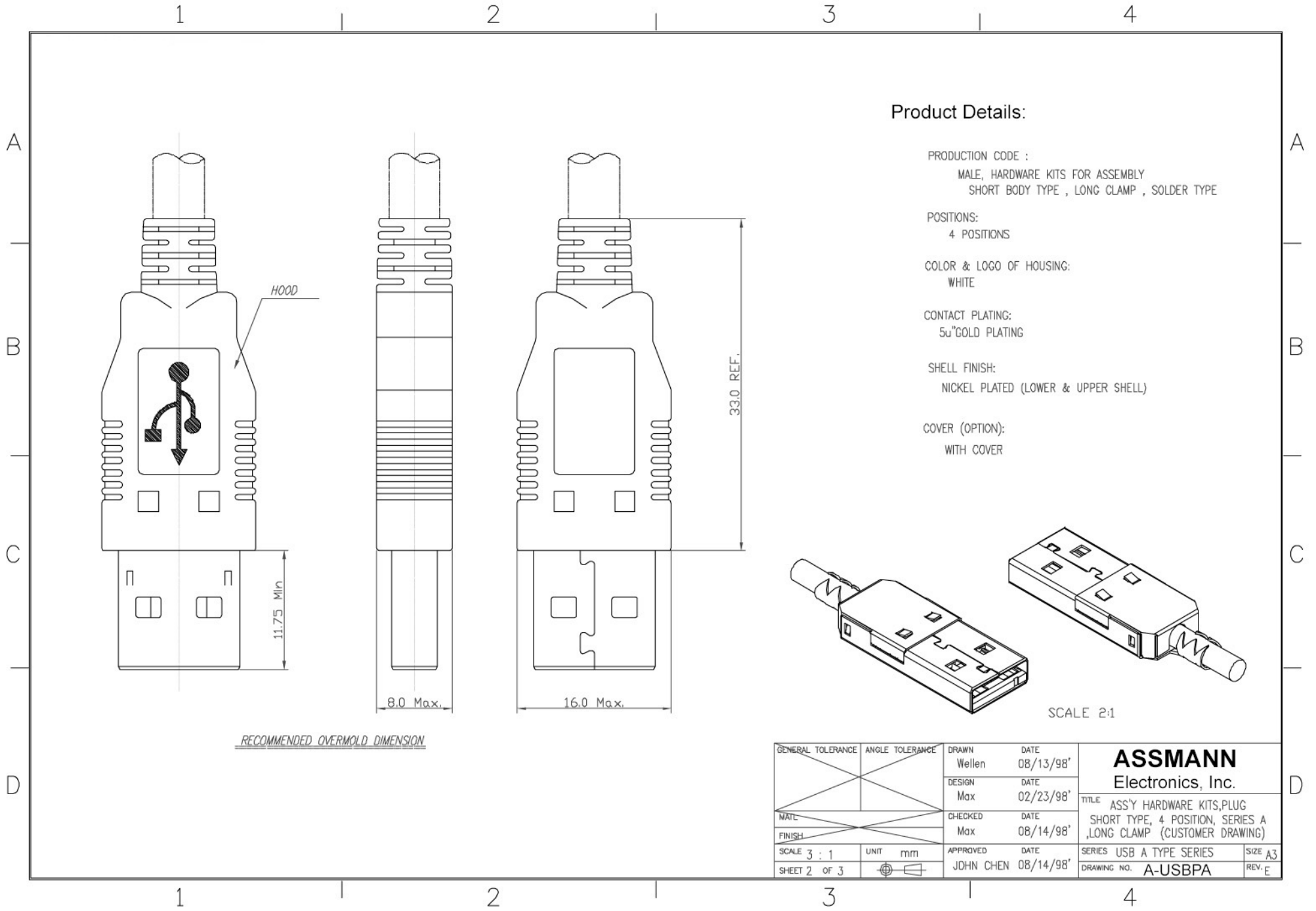


REV.	DESCRIPTION	DRAWN/DATE	CHECK/DATE	APPROVED/DATE
A	NEW RELEASE PER ECN 98017	Wellen 08/13/98'		JOHN CHEN 08/14/98'
B	REV. PER ECR-98073	PING 09/02/98'		Max Yang 09/05/98'
C	REV. PER ECR-98087	JDE 09/24/98'		JOHN CHEN 10/02/98'
D	REV. PER ECR-98132	STANLY 12/21/98'	MAX 12/29/98'	JOHN CHEN 12/29/98'
E	REV. PER ECR-99201 Δ x2	STANLY 07/26/99'		

NOTES :

- RATING :
 - VOLTAGE : 30 VAC (R.M.S.)
 - CURRENT : 1.0 AMPERE MAXIMUM PER CONTACT AT 30°C T-RISE
 - TEMPERATURE : -55°C TO +85°C UNLESS LIMITED BY CABLE OR OVERMOLD (-40°C TO +60°C STORAGE ; +0°C TO +40°C OPERATING)
- ELECTRIC CHARACTERISTIC :
 - CONTACT RESISTANCE : 30 MILLIOHMS MAXIMUM INITIAL
 - INSULATION RESISTANCE : 1,000 MEGOHMS MINIMUM
 - DIELECTRIC WITHSTANDING VOLTAGE : 500 VAC AT SEA LEVEL
- MATERIALS :
 - UPPER & LOWER SHELL : STEEL
 - HOUSING : THERMOPLASTIC, GLASS FILLED, UL 94V-0 RATED
 - CONTACT : COPPER ALLOY
- FINISHES :
 - UPPER & LOWER SHELL :
 - TIN/LEAD: 5.0um Min. BRIGHT TIN/LEAD(9:1) OVER 2.5um Min. COPPER
 - NICKEL: 3.0um-5.0um NICKEL OVER 2.5um Min. COPPER
 - GOLD: 1.5u²Min. GOLD ; 5.0um Min. NICKEL ; 2.5um Min. COPPER
 - CONTACT : SELECTIVE GOLD PLATING
- OTHERS :
 - RECOMMENDED CABLE APPLICATION :
 - OUTTER DIAMETER APPLICABLE RANGE : ϕ 3.4mm TO ϕ 5.3mm
 - ALL PARTS PACKAGED UNASSEMBLED

3	HOUSING WITH CONTACT	1	SEE NOTE 3.2.; 3.3.; 4.2.	
2	LOWER SHELL	1	SEE NOTE 3.1.; 4.1.	
1	UPPER SHELL	1	SEE NOTE 3.1.; 4.1.	
ITEM	PART NAME	Q'TY/EA	MATERIAL/FINISH	NOTE
GENERAL TOLERANCE		ANGLE TOLERANCE	DRAWN DATE	ASSMANN Electronics, Inc. TITLE ASS'Y HARDWARE KITS, PLUG SHORT TYPE, 4 POSITION, SERIES A ,LONG CLAMP (CUSTOMER DRAWING)
X	± 0.30	X°	$\pm 3.0'$	
.X	± 0.25	.X°	$\pm 2.0'$	
.XX	± 0.13	.XX°	$\pm 1.0'$	
.XXX	± 0.05			
MATERIAL SEE NOTES		CHECKED DATE		
FINISH SEE NOTES		Max	08/14/98'	
SCALE 3 : 1	UNIT mm	APPROVED DATE		
SHEET 1 OF 3		JOHN CHEN	08/14/98'	SERIES USB A TYPE SERIES SIZE A3
				DRAWING NO. A-USBPA REV. E



Product Details:

PRODUCTION CODE :
 MALE, HARDWARE KITS FOR ASSEMBLY
 SHORT BODY TYPE , LONG CLAMP , SOLDER TYPE

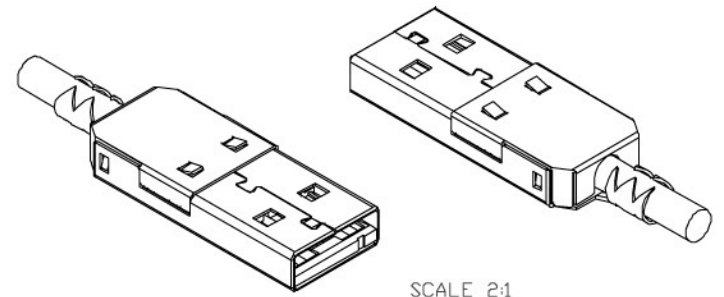
POSITIONS:
 4 POSITIONS

COLOR & LOGO OF HOUSING:
 WHITE

CONTACT PLATING:
 5 μ GOLD PLATING

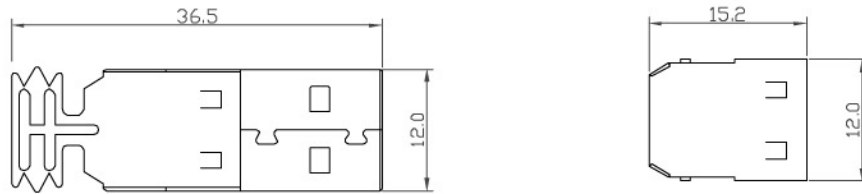
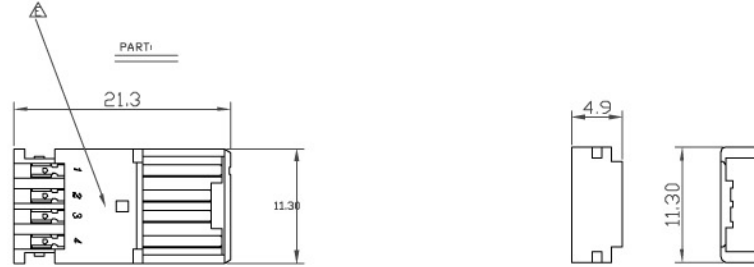
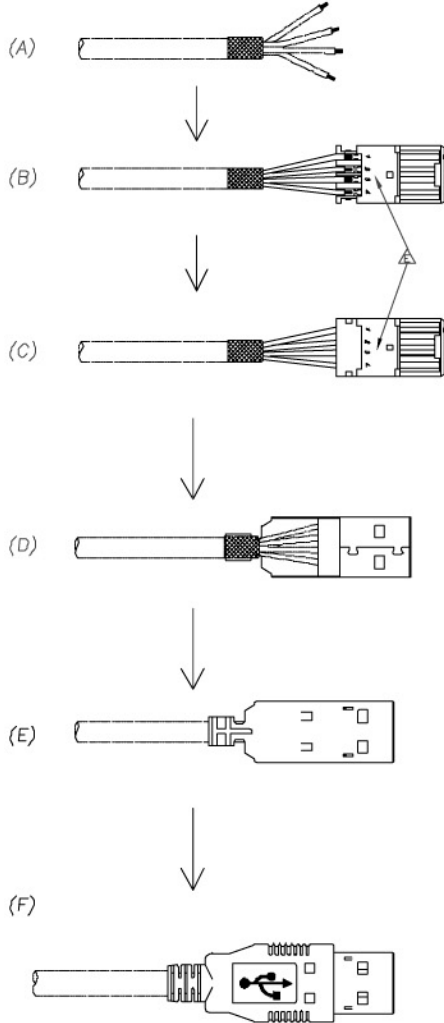
SHELL FINISH:
 NICKEL PLATED (LOWER & UPPER SHELL)

COVER (OPTION):
 WITH COVER



GENERAL TOLERANCE		ANGLE TOLERANCE		DRAWN Wellen	DATE 08/13/98'	ASSMANN Electronics, Inc.
MATL		FINISH		DESIGN Max	DATE 02/23/98'	
SCALE 3 : 1		UNIT mm		CHECKED Max	DATE 08/14/98'	SERIES USB A TYPE SERIES
SHEET 2 OF 3				APPROVED JOHN CHEN	DATE 08/14/98'	SIZE A3 REV. E
				DRAWING NO. A-USBPA		

ASSEMBLY PROCESS:
SCALE 1:1



GENERAL TOLERANCE		ANGLE TOLERANCE		DRAWN	DATE	ASSMANN Electronics, Inc.	
.X	±0.38	.X°	±3.0°	Wellen	08/13/98'		
.X	±0.25	.X°	±2.0°	DESIGN	DATE	TITLE OVERMOLD HARDWARE KITS, PLUG SHORT TYPE, 4 POSITION, SOLDER TYPE , LONG CLAMP (CUSTOMER DRAWING)	
.XX	±0.13	.XX°	±1.0°	Max	02/23/98'		
.XXX	±0.05			CHECKED	DATE	SERIES	USB A TYPE SERIES
MATERIAL SEE NOTES				Max	08/14/98'	SIZE	A3
FINISH SEE NOTES				APPROVED	DATE	DRAWING NO.	A-USBPA
SCALE	2 : 1	UNIT	mm	JOHN CHEN	08/14/98'	REV.	E
SHEET	3 OF 3						