

1

2

3

4

A

A

B

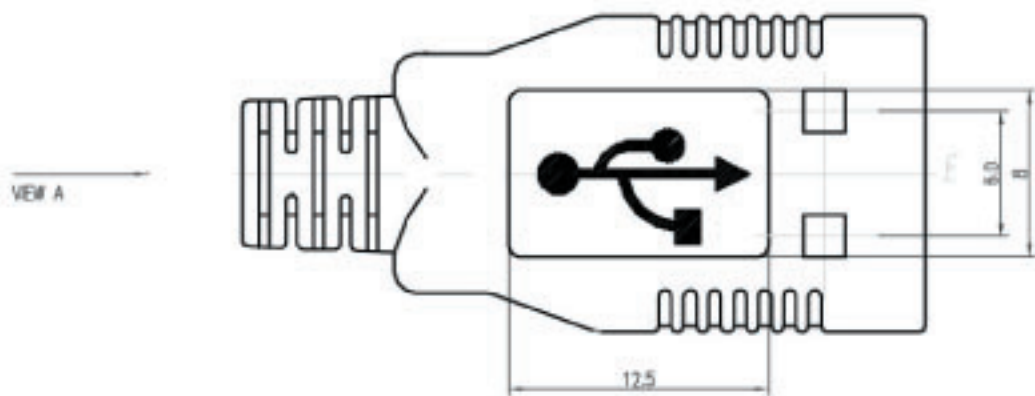
B

C

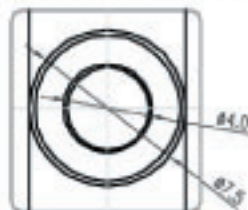
C

D

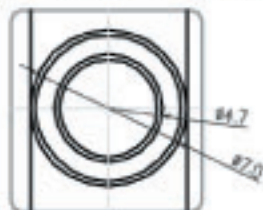
D



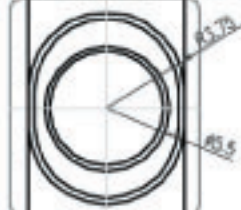
CABLE EXIT: TYPE I
(RECOMMENDED CABLE OD=#3.4~#3.8)



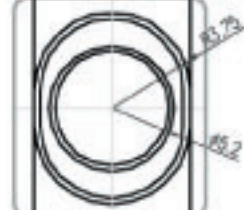
CABLE EXIT: TYPE II
(RECOMMENDED CABLE OD=#3.9~#4.6)



CABLE EXIT: TYPE III
(RECOMMENDED CABLE OD=#4.7~#5.3)



△CABLE EXIT: TYPE IV
(RECOMMENDED CABLE OD=#4.5~#4.9)



VIEW A

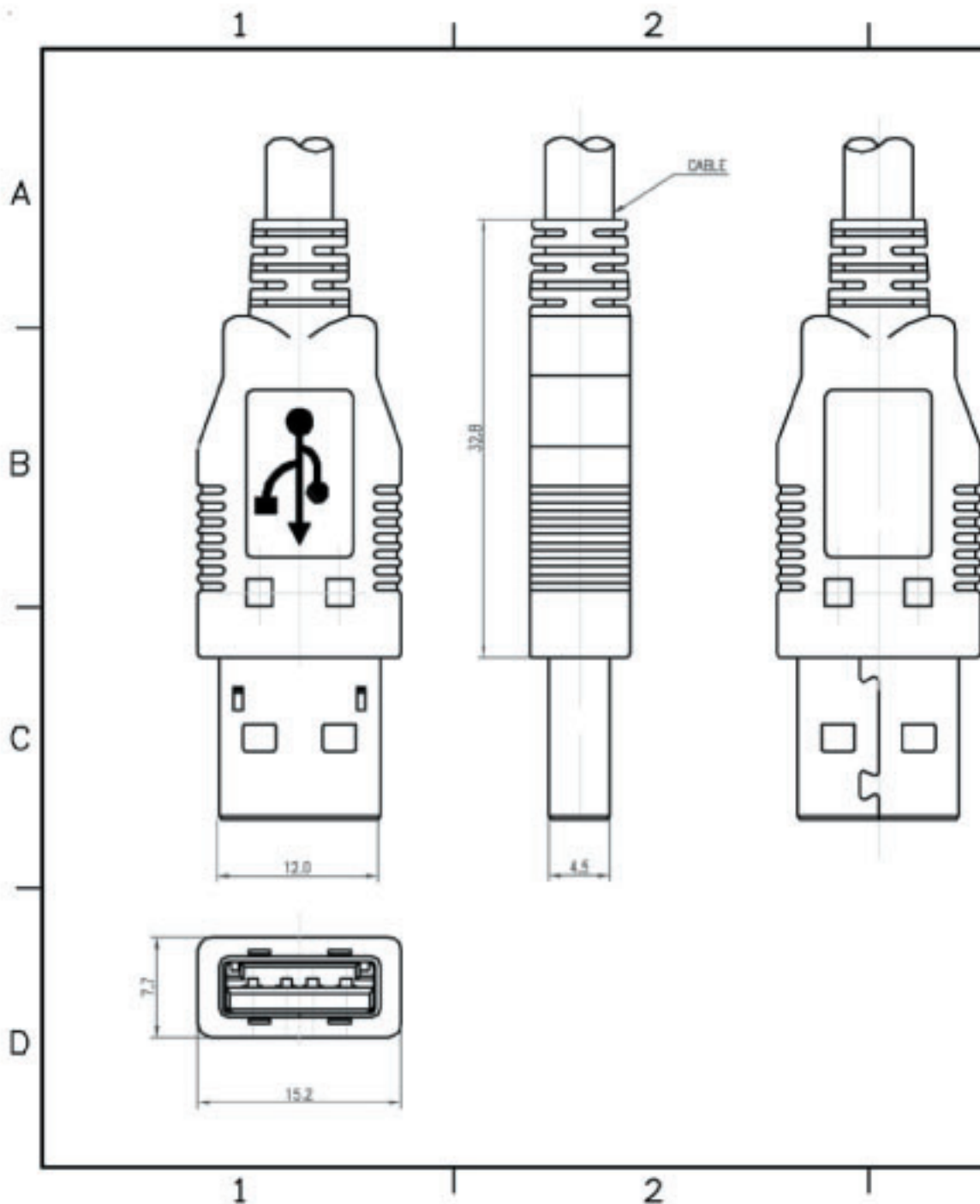
GENERAL TOLERANCE		ANGLE TOLERANCE		DRWN	DATE	ASSMANN Electronics, Inc.	
K	±0.38	X	±3.0°	WELLEN	07/23/98		
J	±0.25	.X	±2.0°	DESIGN	DATE		
.XX	±0.13	.X	±1.0°	MAX YANG	04/10/98	SERIES USB A TYPE SERIES	
.XXX	±0.06	.XX	±1.0°	CHECKED	DATE		
FINISH SEE NOTES				MAX	07/23/98	DRAWING NO. U-UCTB-01-00	
SCALE 3 : 1		UNIT INCH		APPROVED	DATE	REV. 1	
SHEET 2 OF 2				JOHN CHEN	07/27/98		

1

2

3

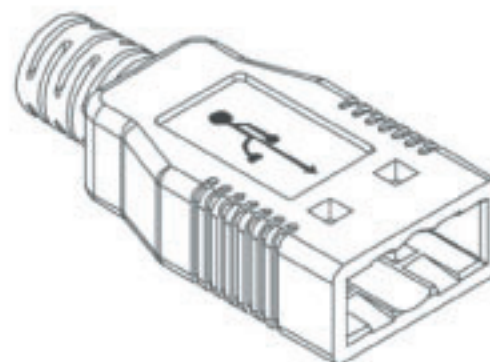
4



REV.	DESCRIPTION	DRAWN/DATE	CHECK/DATE	APPROVED/DATE
A	NEW RELEASE PER NPR-98006	WELLEN 07/23/98'		JOHN CHEN 07/27/98'
B	REV. PER ECR-98065	PING 08/27/98'		Max Yang 09/05/98'
C	REV. PER ECR-98132	STANLY 12/15/98'		JOHN CHEN 12/16/98'
D	REV. PER ECR-99053 Δ X11	Sterly 02/23/99'	MAX 02/28/99'	JOHN CHEN 03/01/99'
E	REV. PER ECR-99292 Δ X4	Sterly 09/19/99'	MAX 09/29/99'	JOHN CHEN 10/04/99'
F	REV. PER ECR-00101 Δ X1	KELLY 02/25/00'	MAX 02/25/00'	JOHN CHEN 02/25/00'
G	REV. PER ECR-00278 Δ X2	Sterly 10/08/00'	--	MAX 10/11/00'
H	REV. PER SZECR-01111 Δ X1	A.King 02/20/01'	TOM 02/22/01'	ROGER 02/22/01'
I	REV. PER SZECR-01800 Δ X5	JWO 08/23/01'	TOM 08/29/01'	MAX 08/29/01'

Δ NOTE :

- 1.0. MATERIALS :
 - 1.1. ABS RESIN, UL 94V-0 RATED
- 2.0. OTHER :
 - 2.1. ALL PART MUST BE PURCHASED SEPARATELY (REFER TO TABLE B)
 - 2.2. PRODUCT NUMBERING CODE: REFER TO TABLE A



GENERAL TOLERANCE	ANGLE TOLERANCE	DRAWN	DATE	ASSMANN Electronics, Inc.
F, 10.30 X 10.25 .XX ±0.12 .XXX ±0.02	F, 0.3/0 3° ±2.0 XX° ±1.0	WELLEN	07/23/98'	
MATL. SEE NOTES	FINISH SEE NOTES	DESIGN	DATE	
SCALE 3 : 1	UNIT (MM)	MAX YANG	04/10/98'	SERIES USB A TYPE SERIES
SHEET 1 OF 2		CHECKED	DATE	
		MAX	07/23/98'	DRAWING NO. CI-UAC18-01-00
		APPROVED	DATE	
		JOHN CHEN	07/27/98'	REV. 1