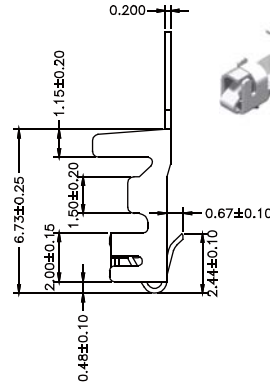
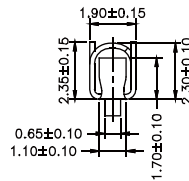
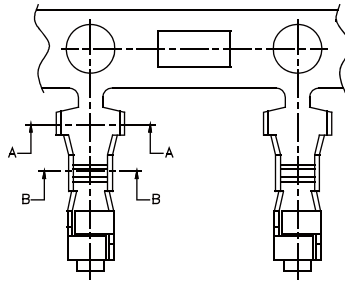
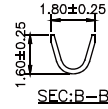
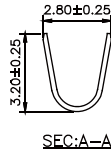


# CONNECTORS MANUFACTURER



## 2.5mm Terminal / Housing / Wafer R/A / Straight Type

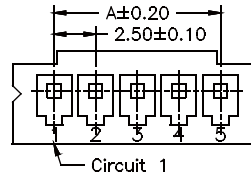
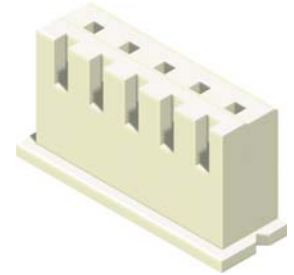
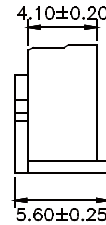
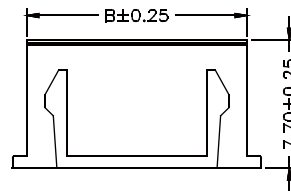
Specifications  
 Current Rating: 3A AC,DC  
 Voltage Rating: 250V AC,DC  
 Temperature Range: -25°C to +85°C  
 Contact Resistance: 10mΩ Max  
 Insulation Resistance: 1000MΩ Min  
 Withstanding Voltage: 1000V AC/minute  
 Terminal: Brass / Tin Plated  
 Material: Nylon 66, UL94V-0



Part No.	Wire Range	Insulation O.D.	Material	Finish
2503-TTB-L	#22-#28	1.90mm(Max)	Brass	Tin Plated
2503-TTP-L	#22-#28	1.90mm(Max)	Phosphor Bronze	

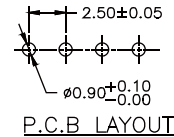
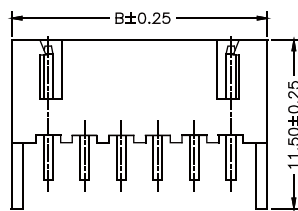
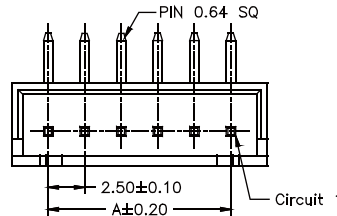
Part No.:2503-T-L

No. of Contacts	Dimensions		No. of Contacts	Dimensions	
	A	B		A	B
2	2.50	5.70	12	27.50	30.70
3	5.00	8.20	13	30.00	33.20
4	7.50	10.70	14	32.50	35.70
5	10.00	13.20	15	35.00	38.20
6	12.50	15.70	16	37.50	40.70
7	15.00	18.20	17	40.00	43.20
8	17.50	20.70	18	42.50	45.70
9	20.00	23.20	19	45.00	48.20
10	22.50	25.70	20	47.50	50.70
11	25.00	28.20			

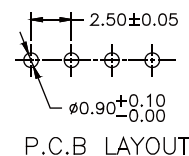
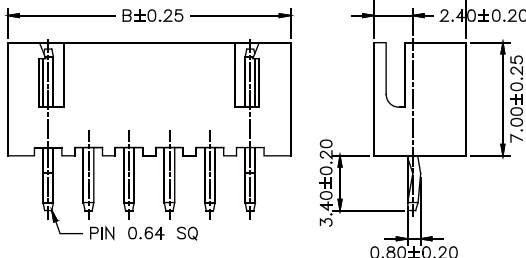
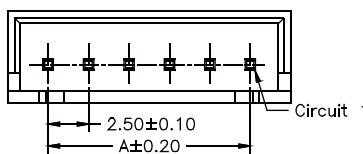


Part No.:2503H-XXW-L

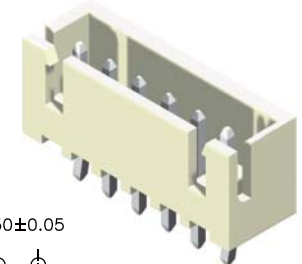
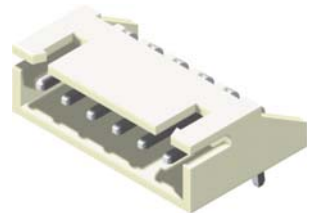
No. of Contacts	Dimensions	
	A	B
2	2.50	7.50
3	5.00	10.00
4	7.50	12.50
5	10.00	15.00
6	12.50	17.50
7	15.00	20.00
8	17.50	22.50
9	20.00	25.00
10	22.50	27.50
11	25.00	30.00
12	27.50	32.50
13	30.00	35.00
14	32.50	37.50
15	35.00	40.00
16	37.50	42.50
17	40.00	45.00
18	42.50	47.50
19	45.00	50.00
20	47.50	52.50



Part No.:2503R-XXTW-L



Part No.:2503S-XXTW-L



Housing Wafer Terminal



ROHS

AMTEK CONNECTOR MANUFACTURING