

# Customer Information Sheet

DRAWING No.: M22-19X00XX

SHEET 1 OF 2

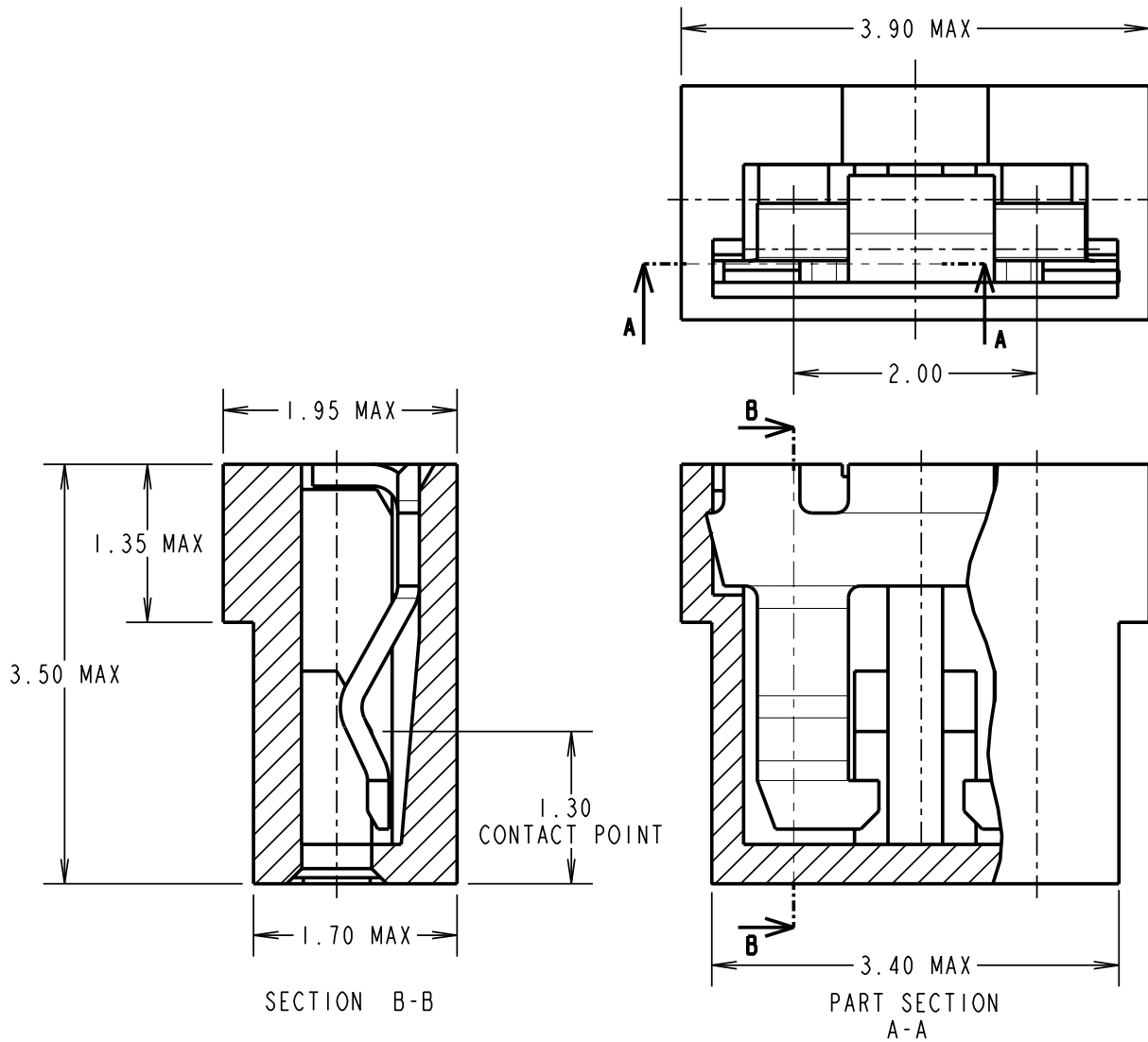
IF IN DOUBT - ASK

(C)

NOT TO SCALE

THIRD ANGLE PROJECTION

ALL DIMENSIONS IN mm



**SPECIFICATIONS:**  
**MATERIALS:**  
 MOULDING = GLASS FILLED POLYESTER UL94V-0  
 CONTACT = BERYLLIUM COPPER  
**FINISH:**  
 CONTACT:  
 05 = 0.13µ GOLD ON CONTACT FACE OVER NICKEL  
 46 = 3µ 100% TIN OVER NICKEL  
 MOULDING COLOUR = SEE ORDER CODE  
**ELECTRICAL:**  
 CURRENT RATING AT 25°C = 2A MAX  
 WORKING VOLTAGE = 250V AC/DC  
 VOLTAGE PROOF = 500V AC/DC @ 50Hz  
 CONTACT RESISTANCE (MAXIMUM):  
 TIN/LEAD = 20MILLOHMS INITIAL  
                   25 MILLIOHMS AFTER CONDITIONING  
 GOLD = 15 MILLIOHMS INITIAL  
           20 MILLIOHMS AFTER CONDITIONING  
 INSULATION RESISTANCE (MINIMUM):  
 INITIAL = 1000 MEGOHMS  
 AFTER CONDITIONING = 1000 MEGAOHMS  
**ENVIRONMENTAL:**  
 TEMPERATURE RANGE = -40°C TO +85°C  
**MECHANICAL:**  
**DURABILITY:**  
 TIN/LEAD = 50 OPERATIONS  
 GOLD = 300 OPERATIONS  
 INSERTION FORCE = 10N MAX  
 WITHDRAWAL FORCE = IN MIN  
 FOR COMPLETE SPECIFICATION, SEE COMPONENT SPECIFICATION C013XX (LATEST ISSUE)

ORDER CODE:  
**M22-19X00XX**

MOULDING COLOUR  
 0 = BLACK  
 1 = BLUE  
 2 = RED  
 3 = LIGHT GREY

CONTACT FINISH  
 05 = GOLD  
 46 = 100% TIN

RA	5	08.10.08	10154
NAME	ISS.	DATE	C/NOTE
APPROVED:		R. ADDE	
CHECKED:		M.G. PLESTED	
DRAWN:		W. J. BOURNE	
CUSTOMER REF.:			
ASSEMBLY DRG:			

**HARWIN**

HARWIN USA TEL: 603 893 5376 FAX: 603 893 5396 mis@harwin.com	HARWIN Europe (UK) TEL: 023 9231 4545 FAX: 023 9231 4590 mis@harwin.co.uk	HARWIN Asia TEL: +65 6 779 4909 FAX: +65 6 779 3868 mis@harwin.com.sg
--	--	--

THIS DRAWING AND ANY INFORMATION OR DESCRIPTIVE MATTER SET OUT HEREON ARE CONFIDENTIAL AND COPYRIGHT PROPERTY OF THE HARWIN GROUP AND MUST NOT BE DISCLOSED, LOANED, COPIED OR USED FOR MANUFACTURING, TENDERING OR FOR ANY OTHER PURPOSE WITHOUT THEIR WRITTEN PERMISSION.

**TOLERANCES**  
 X. = ±1mm  
 X.X = ±0.25mm  
 X.XX = ±0.10mm  
 X.XXX = ±0.01mm  
 ANGLES = ±5°  
 UNLESS STATED

**MATERIAL:**

**FINISH:**

**S/AREA:** mm<sup>2</sup>

**TITLE:** 2mm PITCH JUMPER SOCKET ASSEMBLY (OPEN TOP)

**DRAWING NUMBER:** M22-19X00XX

SHT 1 OF 2