

Construction

- Building-block system
- MKP technology (dry, self-healing)
Dielectric: polypropylene, metallized
- Metal case with synthetic resin terminals
- For central screw fixing

Features

- Compact dimensions
- Variable current rating and capacitance through building-block system
- High attenuation
- Simple fitting
- High contact reliability through central screw fixing



Applications

Broadband interference suppression for AC/DC supply lines, e.g. in

- shielded rooms
- telephone exchanges, base stations
- electrical machines and systems
- power supplies

Terminals

- Threaded studs
- Axial leads

Marking

Manufacturer, ordering code, rated capacitance, rated voltage, rated current, test voltage, climatic category, circuit diagram, date of manufacture (MM.YY), approvals

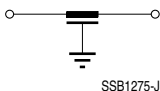
Standards

Feedthrough capacitors comply with EN 132400

Safety information

Due to the high capacitance ratings protective measures (e.g. protective earthing) in accordance with equipment/system regulations are required.

Circuit diagram



Feedthrough capacitors Ø 55 mm
Characteristics and ordering codes

I _R A	C _R µF	V _R		V _{test} VDC	Ter- minal	Dimensions (mm)			Ordering code
		VAC	VDC			Ø	l +1	l ₁ -1	
63	0.5	250	600	3000	M6	55	30	100	B85121A2504A630
	1.0	250	600	2500	M6	55	30	100	B85121A2105A630
	2.0	250	600	2500	M6	55	60	130	B85121A2205A630
	4.7	250	600	2000	M6	55	60	130	B85121A2475A630
100	0.5	250	600	3000	M8	55	30	110	B85121A2504A101
	1.0	250	600	2500	M8	55	30	110	B85121A2105A101
	2.0	250	600	2500	M8	55	60	140	B85121A2205A101
	4.7	250	600	2000	M8	55	60	140	B85121A2475A101
200	0.5	250	600	3000	M10	55	30	120	B85121A2504A201
	1.0	250	600	2500	M10	55	30	120	B85121A2105A201
	2.0	250	600	2500	M10	55	60	150	B85121A2205A201
	4.7	250	600	2000	M10	55	60	150	B85121A2475A201

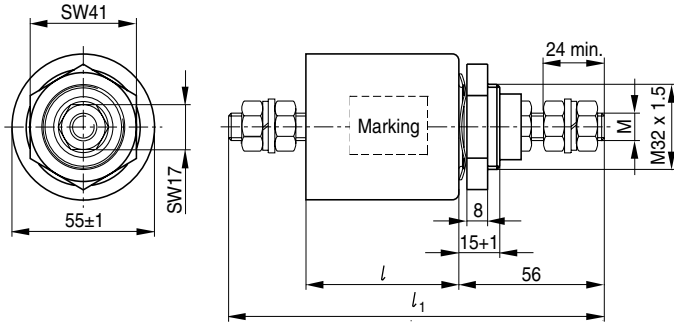
Insertion loss (dB); typical values at 50 Ω

Capacitance C _R	10 kHz	100 kHz	1 MHz	10 MHz	100 MHz	1 GHz
0.5 µF	2	15	35	40	80	> 90
1.0 µF	5	25	45	50	85	> 90
2.0 µF	10	30	50	55	> 90	> 90
4.7 µF	15	35	55	65	> 90	> 90

General technical data

Capacitance tolerance:	±20%
IEC climatic category:	40/085/56 (-40 °C/+85 °C, 56 days damp heat test)
Screw cap fixing	Standard M32 × 1.5; Special fixing M27 × 1.5 possible

Dimensional drawing



SSB1272-U

Symbols and terms

Symbol	English	German
I_R	Rated current	Bemessungsstrom
C_R	Rated capacitance	Bemessungskapazität
V_R	Rated voltage	Bemessungsspannung
V_{test}	Test voltage	Prüfspannung

Published by EPCOS AG
Corporate Communications, P.O. Box 80 17 09, 81617 Munich, GERMANY
☎ ++49 89 636 09, FAX (0 89) 636-2 26 89

© EPCOS AG 2003. Reproduction, publication and dissemination of this brochure and the information contained therein without EPCOS' prior express consent is prohibited.

Purchase orders are subject to the General Conditions for the Supply of Products and Services of the Electrical and Electronics Industry recommended by the ZVEI (German Electrical and Electronic Manufacturers' Association), unless otherwise agreed.

This brochure replaces the previous edition.

For questions on technology, prices and delivery please contact the Sales Offices of EPCOS AG or the international Representatives.

Due to technical requirements components may contain dangerous substances. For information on the type in question please also contact one of our Sales Offices.