



**BOURNS®**

## Features

- Formerly *J.W. Miller* model
- Current rating up to 10 A
- Inductance range: 1  $\mu$ H to 100,000  $\mu$ H
- RoHS compliant\*

## Applications

- DC/DC converters
- Power supplies
- Desktop notebooks
- Output chokes

# RL622 Series - Radial Lead RF Choke

### Electrical Specifications (@ 25 °C)

Part Number	Inductance ( $\mu$ H)	Tol.	Q (Min.)	Test Frequency		SRF (MHz) Typ.	DCR ( $\Omega$ ) Max.	I <sub>dc</sub> (A)
				L	Q			
RL622-1R0K-RC	1.0	$\pm 10\%$	20	7.96 MHz	7.96 MHz	150	0.013	10
RL622-1R5K-RC	1.5	$\pm 10\%$	20	7.96 MHz	7.96 MHz	130	0.016	8.5
RL622-2R2K-RC	2.2	$\pm 10\%$	20	7.96 MHz	7.96 MHz	100	0.021	6.5
RL622-3R3K-RC	3.3	$\pm 10\%$	20	7.96 MHz	7.96 MHz	79	0.025	5.5
RL622-4R7K-RC	4.7	$\pm 10\%$	20	7.96 MHz	7.96 MHz	51	0.030	4.3
RL622-6R8K-RC	6.8	$\pm 10\%$	20	7.96 MHz	7.96 MHz	29	0.035	3.7
RL622-100K-RC	10	$\pm 10\%$	50	2.52 MHz	2.52 MHz	14	0.045	3.0
RL622-120K-RC	12	$\pm 10\%$	50	2.52 MHz	2.52 MHz	13	0.050	2.7
RL622-150K-RC	15	$\pm 10\%$	40	2.52 MHz	2.52 MHz	12	0.056	2.3
RL622-180K-RC	18	$\pm 10\%$	40	2.52 MHz	2.52 MHz	11	0.061	2.2
RL622-220K-RC	22	$\pm 10\%$	40	2.52 MHz	2.52 MHz	9.2	0.070	2.0
RL622-270K-RC	27	$\pm 10\%$	30	2.52 MHz	2.52 MHz	8.5	0.080	1.7
RL622-330K-RC	33	$\pm 10\%$	30	2.52 MHz	2.52 MHz	7.8	0.090	1.6
RL622-390K-RC	39	$\pm 10\%$	30	2.52 MHz	2.52 MHz	6.9	0.10	1.5
RL622-470K-RC	47	$\pm 10\%$	30	2.52 MHz	2.52 MHz	6.5	0.16	1.4
RL622-560K-RC	56	$\pm 10\%$	30	2.52 MHz	2.52 MHz	5.4	0.18	1.3
RL622-680K-RC	68	$\pm 10\%$	30	2.52 MHz	2.52 MHz	4.9	0.21	1.2
RL622-820K-RC	82	$\pm 10\%$	30	2.52 MHz	2.52 MHz	4.1	0.23	1.1
RL622-101K-RC	100	$\pm 10\%$	20	796 KHz	796 KHz	3.7	0.28	0.91
RL622-121K-RC	120	$\pm 10\%$	20	796 KHz	796 KHz	3.4	0.32	0.84
RL622-151K-RC	150	$\pm 10\%$	20	796 KHz	796 KHz	3.2	0.37	0.75
RL622-181K-RC	180	$\pm 10\%$	20	796 KHz	796 KHz	2.8	0.58	0.69
RL622-221K-RC	220	$\pm 10\%$	20	796 KHz	796 KHz	2.7	0.65	0.64
RL622-271K-RC	270	$\pm 10\%$	20	796 KHz	796 KHz	2.4	0.75	0.57
RL622-331K-RC	330	$\pm 10\%$	20	796 KHz	796 KHz	2.3	0.85	0.54
RL622-391K-RC	390	$\pm 10\%$	20	796 KHz	796 KHz	2.1	1.0	0.48
RL622-471K-RC	470	$\pm 10\%$	20	796 KHz	796 KHz	1.9	1.1	0.46
RL622-561K-RC	560	$\pm 10\%$	20	796 KHz	796 KHz	1.8	1.4	0.41
RL622-681K-RC	680	$\pm 10\%$	20	796 KHz	796 KHz	1.6	1.6	0.38
RL622-821K-RC	820	$\pm 10\%$	20	796 KHz	796 KHz	1.5	1.8	0.38
RL622-102K-RC	1000	$\pm 10\%$	50	252 KHz	252 KHz	1.3	2.9	0.29
RL622-122K-RC	1200	$\pm 10\%$	50	252 KHz	252 KHz	1.1	4.0	0.13
RL622-152K-RC	1500	$\pm 10\%$	20	252 KHz	252 KHz	1.0	6.1	0.08
RL622-182K-RC	1800	$\pm 10\%$	20	252 KHz	252 KHz	1.0	6.4	0.08
RL622-222K-RC	2200	$\pm 10\%$	20	252 KHz	252 KHz	0.9	6.8	0.08
RL622-272K-RC	2700	$\pm 10\%$	20	252 KHz	252 KHz	0.9	7.7	0.08
RL622-332K-RC	3300	$\pm 10\%$	20	252 KHz	252 KHz	0.7	9.0	0.08
RL622-392K-RC	3900	$\pm 10\%$	20	252 KHz	252 KHz	0.6	14	0.08
RL622-472K-RC	4700	$\pm 10\%$	20	252 KHz	252 KHz	0.5	16	0.05
RL622-562K-RC	5600	$\pm 10\%$	20	252 KHz	252 KHz	0.4	18	0.05
RL622-682K-RC	6800	$\pm 10\%$	20	252 KHz	252 KHz	0.4	19	0.05
RL622-822K-RC	8200	$\pm 10\%$	20	252 KHz	252 KHz	0.3	21	0.05
RL622-103K-RC	10,000	$\pm 10\%$	40	79.6 KHz	79.6 KHz	0.3	25	0.05
RL622-123K-RC	12,000	$\pm 10\%$	40	79.6 KHz	79.6 KHz	0.3	33	0.04
RL622-153K-RC	15,000	$\pm 10\%$	40	79.6 KHz	79.6 KHz	0.2	37	0.04
RL622-183K-RC	18,000	$\pm 10\%$	30	79.6 KHz	79.6 KHz	0.2	40	0.04
RL622-223K-RC	22,000	$\pm 10\%$	30	79.6 KHz	79.6 KHz	0.1	56	0.03
RL622-273K-RC	27,000	$\pm 10\%$	30	79.6 KHz	79.6 KHz	0.1	62	0.03

~ Continued on page 2 ~

\*RoHS Directive 2002/95/EC Jan 27 2003 including Annex.

Specifications are subject to change without notice.

Customers should verify actual device performance in their specific applications

### General Specifications

Rated Current..... Inductance drop 10 %  
Operating Temperature

..... -55 °C to +105 °C

Storage Temperature

..... -55 °C to +105 °C

### Materials

Core Material..... Ferrite

Wire..... Enameled copper

Terminal Coating..... Sn

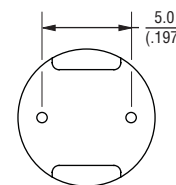
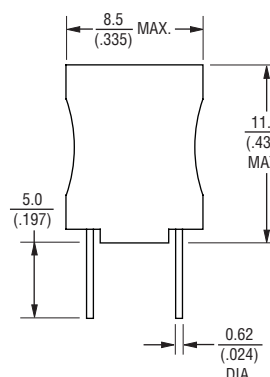
### Marking

..... Value code on side of inductor

### Packaging

Standard..... 100 pcs. per bag

### Product Dimensions



DIMENSIONS:  $\frac{\text{MM}}{\text{(INCHES)}}$

### Electrical Schematic



# RL622 Series - Radial Lead RF Choke

**BOURNS®**

## Electrical Specifications (@ 25 °C) - Continued

Part Number	Inductance (μH)	Tol.	Q (Min.)	Test Frequency		SRF (MHz) Typ.	DCR (Ω) Max.	I dc (A)
				L	Q			
RL622-333K-RC	33,000	±10 %	30	79.6 KHz	79.6 KHz	0.1	70	0.03
RL622-393K-RC	39,000	±10 %	30	79.6 KHz	79.6 KHz	0.1	80	0.03
RL622-473K-RC	47,000	±10 %	20	79.6 KHz	79.6 KHz	0.1	99	0.03
RL622-563K-RC	56,000	±10 %	20	79.6 KHz	79.6 KHz	0.1	135	0.02
RL622-683K-RC	68,000	±10 %	20	79.6 KHz	79.6 KHz	0.1	150	0.02
RL622-823K-RC	82,000	±10 %	20	79.6 KHz	79.6 KHz	0.1	212	0.02
RL622-104K-RC	100,000	±10 %	20	25.2 KHz	25.2 KHz	0.1	235	0.02

## How To Order

**RL622 - 102K - RC**

Model \_\_\_\_\_

Value/Tolerance Code (see table) \_\_\_\_\_

Compliance Code \_\_\_\_\_

RC = RoHS Compliant

Example:

*RL622-102K-RC = 1000 μH, ±10 %*