

## STRADELLA-IP-28-HB-S-PC

~30° spot beam. Variant made from PC.

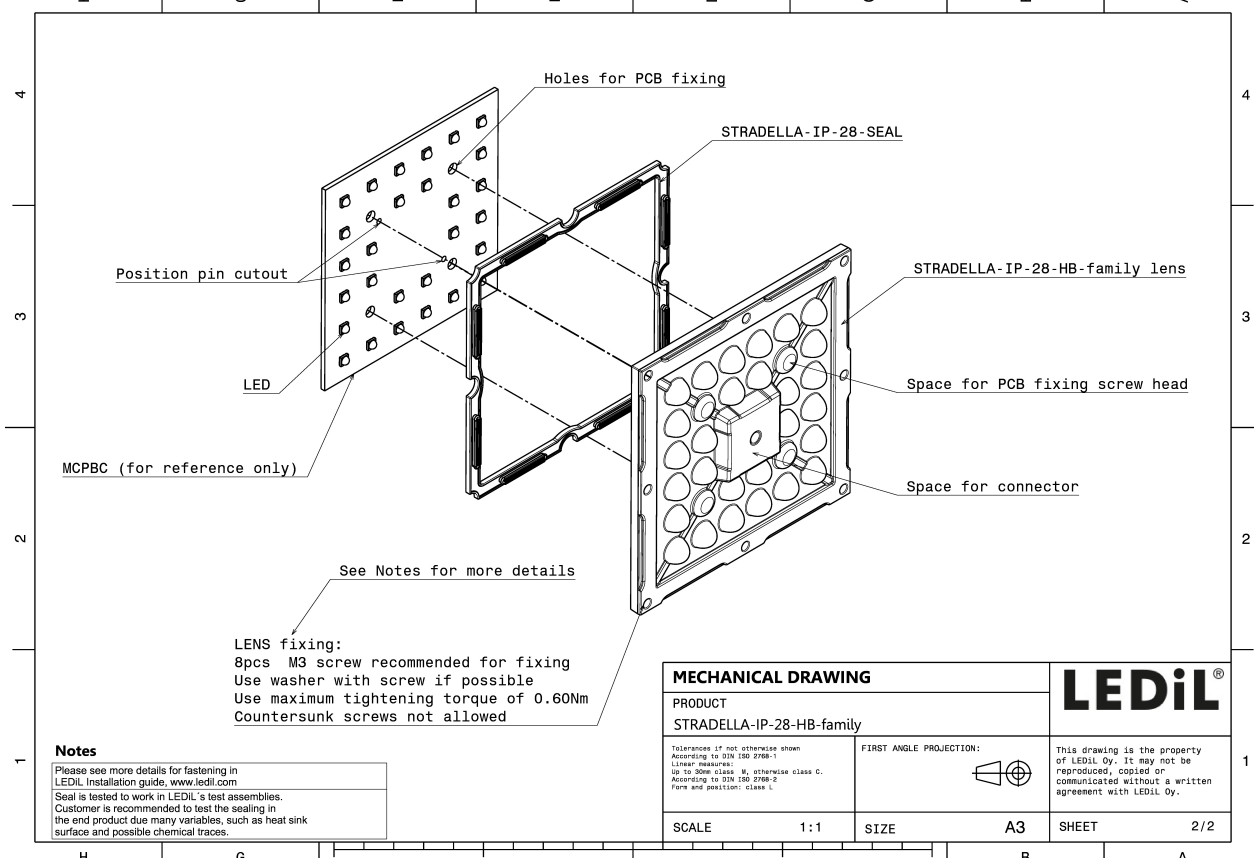
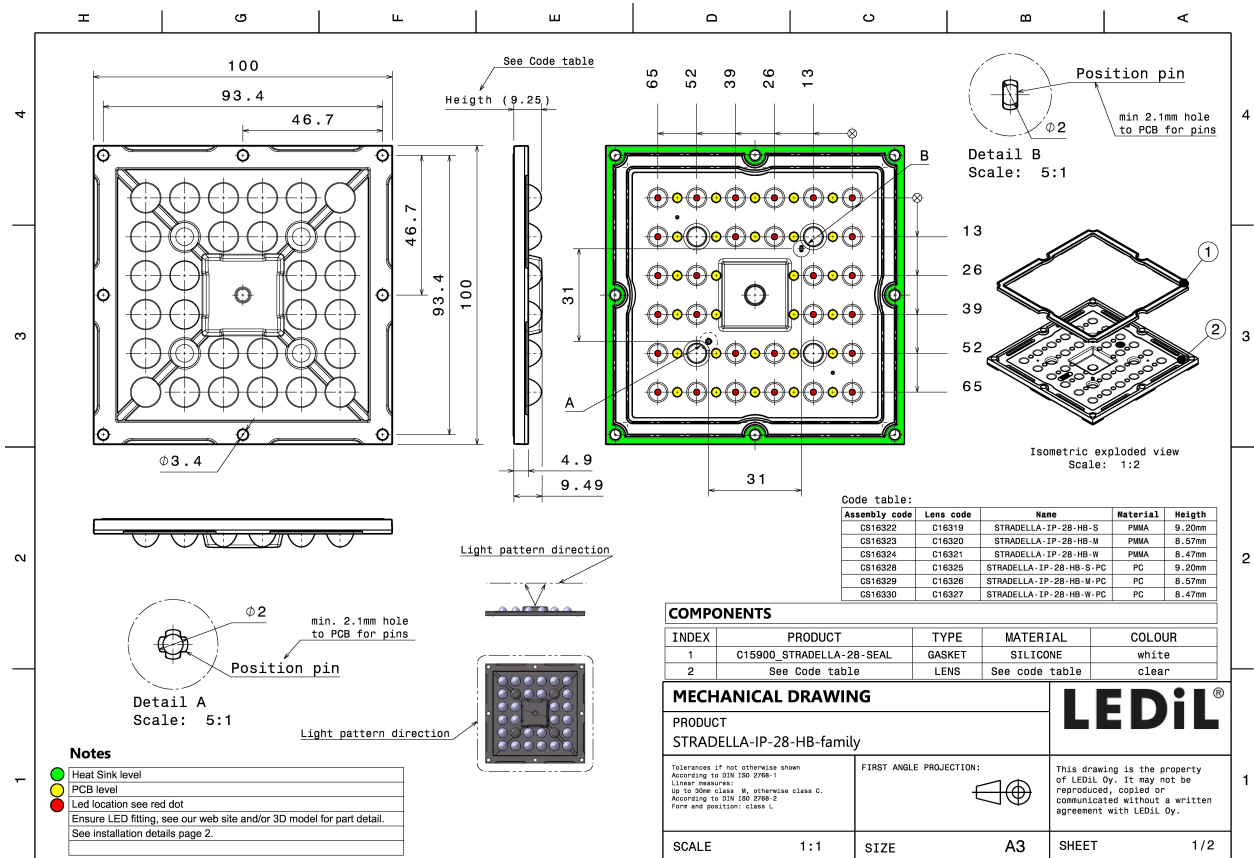
### TECHNICAL SPECIFICATIONS:

Dimensions	100.0 mm
Height	9.5 mm
Fastening	pin, screw
Colour	clear
Box size	476 x 273 x 247 mm
Box weight	6 kg
Quantity in Box	156 pcs
ROHS compliant	yes ⓘ



### MATERIAL SPECIFICATIONS:

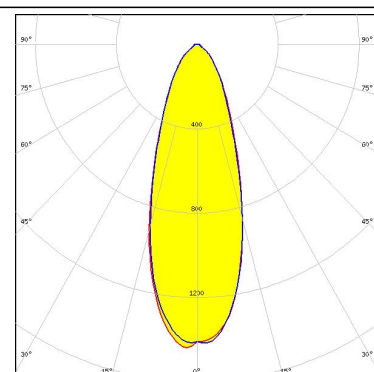
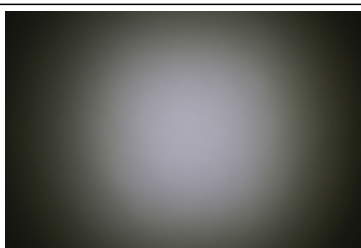
Component	Type	Material	Colour
STRADELLA-IP-28-HB-S-PC	Lens array	PC	clear
STRADELLA-28-SEAL	Seal	Silicone	white



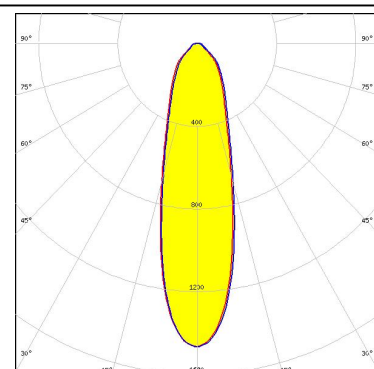
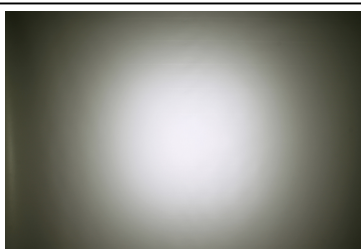
#### PHOTOMETRIC DATA (MEASURED):



LED XP-G3  
FWHM 30.0°  
Efficiency 84 %  
Peak intensity 1.300 cd/lm  
Required components:



LED XT-E  
FWHM 29.0°  
Efficiency 86 %  
Peak intensity 1.500 cd/lm  
Required components:



LED HiLOM SC28 (LH181B)  
FWHM 21.0°  
Efficiency 80 %  
Peak intensity 1.800 cd/lm  
Required components:



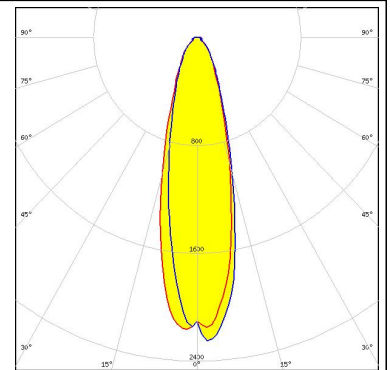
LED HiLOM SM28 (LM301B)  
FWHM 23.0°  
Efficiency 83 %  
Peak intensity 1.800 cd/lm  
Required components:



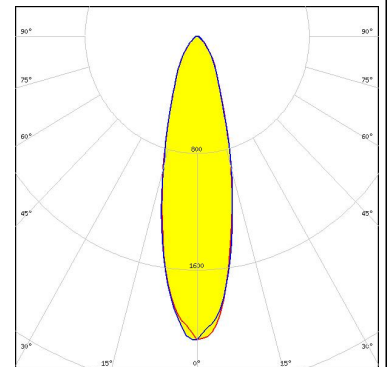
#### PHOTOMETRIC DATA (SIMULATED):



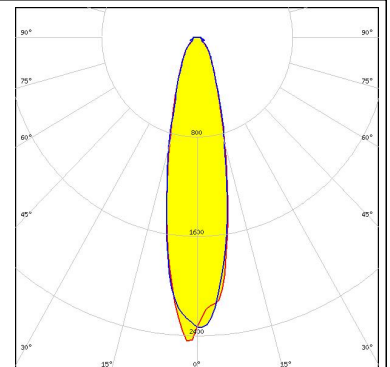
LED LUXEON 3030 2D (Round LES)  
 FWHM 25.0°  
 Efficiency 89 %  
 Peak intensity 2.204 cd/lm  
 Required components:



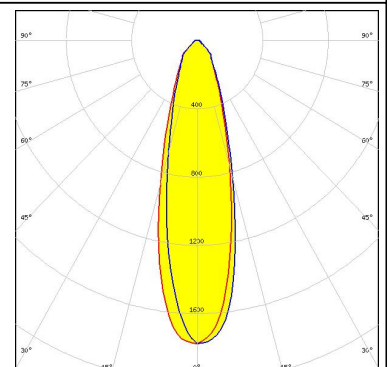
LED NF2x757G  
 FWHM 27.0°  
 Efficiency 91 %  
 Peak intensity 2.150 cd/lm  
 Required components:



LED NVSxE21A  
 FWHM 23.0°  
 Efficiency 89 %  
 Peak intensity 2.384 cd/lm  
 Required components:



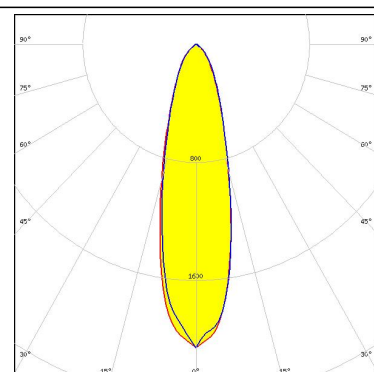
LED Oslon Square Gen3  
 FWHM 27.0°  
 Efficiency 85 %  
 Peak intensity 1.780 cd/lm  
 Required components:



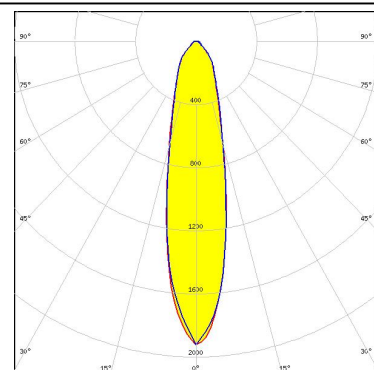
#### PHOTOMETRIC DATA (SIMULATED):



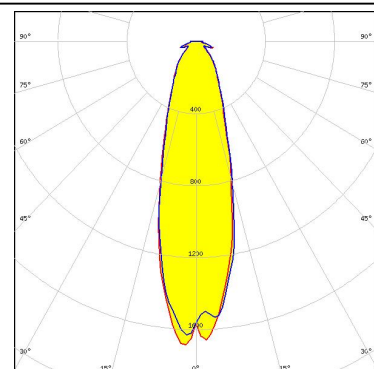
LED Z5M1/Z5M2  
FWHM 27.0°  
Efficiency 87 %  
Peak intensity 2.070 cd/lm  
Required components:



LED Z8Y19  
FWHM 24.0°  
Efficiency 82 %  
Peak intensity 1.920 cd/lm  
Required components:



LED Z8Y22  
FWHM 28.0°  
Efficiency 89 %  
Peak intensity 1.629 cd/lm  
Required components:



#### GENERAL INFORMATION:

NOTE: The typical beam angle will be changed by different color, chip size and chip position tolerance. The typical total beam angle is the full angle measured where the luminous intensity is half of the peak value.

#### MATERIALS:

As part of our continuous research and improvement processes, and to ensure the best possible quality and availability of our products, LEDiL reserves the right to change material grades without notice.

#### PRODUCT DATA USER AGREEMENT AND DISCLAIMER:

The measured data in the provided downloadable LEDiL Product Datasheets and Mechanical 2D-Drawings is rounded and provided as reference for planning. LEDiL Oy's optical specifications have been verified by conducting performance testing of the products in accordance with the company's quality system. The reported data are averaged results of multiple measurements with typical variation. LEDiL Oy reserves the right to without prior notification make changes and improvements to its products.

LEDiL Oy assumes neither warranty, nor guarantee nor any other liability of any kind for the contents and correctness of the provided data. The provided data has been generated with highest diligence but the provided data may in reality not represent the complete possible variation range of all intrinsic parameters. Therefore, in certain cases a deviation from the provided data could occur.

LEDiL Oy reserves the right to undertake technical changes of its products without further notification which could lead to changes in the provided data. LEDiL Oy assumes no liability of any kind for the possible deviation from any provided data or any other damage resulting from the usage of the provided data.

The user agrees to this disclaimer and user agreement with the download or usage of the provided files.

#### LEDiL Oy

Joensuunkatu 13  
FI-24240 SALO  
Finland

#### LEDiL Inc.

228 West Page Street  
Suite D  
Sycamore IL 60178  
USA

#### Local sales and technical support

[www.ledil.com/  
where\\_to\\_buy](http://www.ledil.com/where_to_buy)

#### Shipping locations

Salu, Finland  
Hong Kong, China

#### Distribution Partners

[www.ledil.com/  
where\\_to\\_buy](http://www.ledil.com/where_to_buy)