

FLARE-B

29 x 23 mm lens with ~100° x 10° oval beam.
Assembly with installation tape.

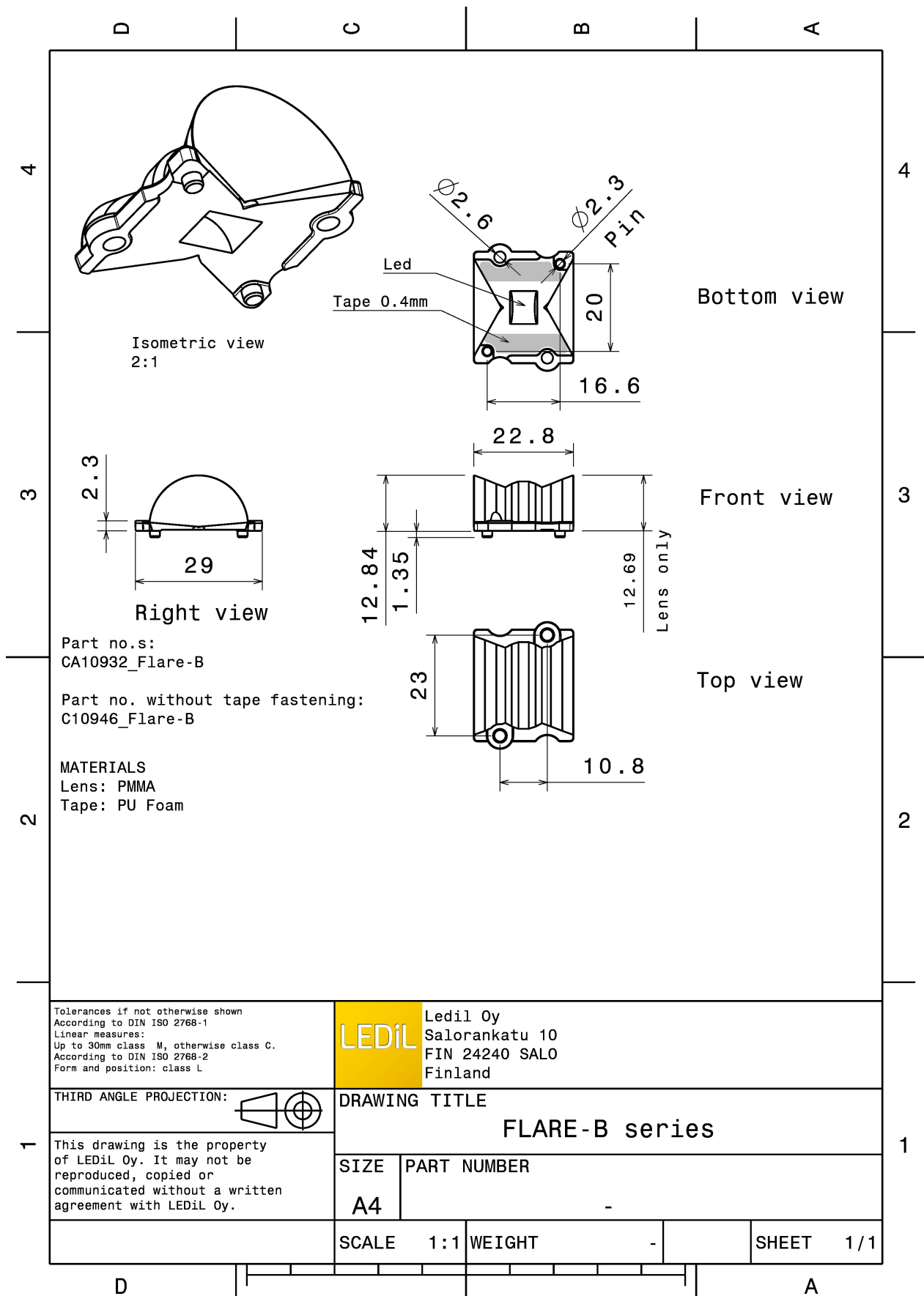
TECHNICAL SPECIFICATIONS:

Dimensions	29.0 x 22.8 mm
Height	12.8 mm
Fastening	tape, screw
Colour	clear
Box size	476 x 273 x 292 mm
Box weight	9.8 kg
Quantity in Box	2448 pcs
ROHS compliant	yes ⓘ



MATERIAL SPECIFICATIONS:

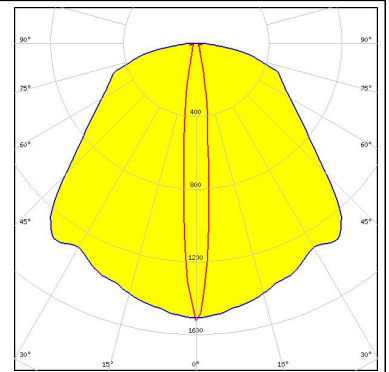
Component	Type	Material	Colour
FLARE-B	Lens	PMMA	clear
FLARE-B-TAPE	Tape	Acrylic tape	black



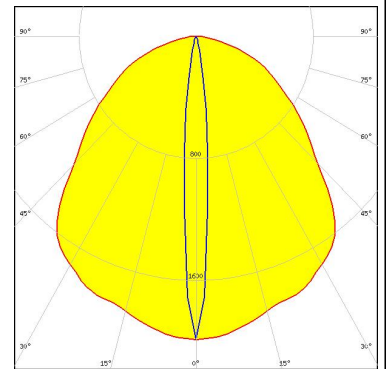
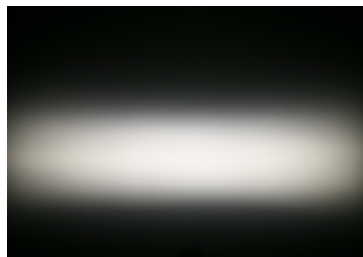
PHOTOMETRIC DATA (MEASURED):



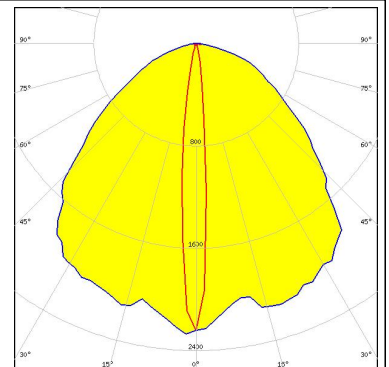
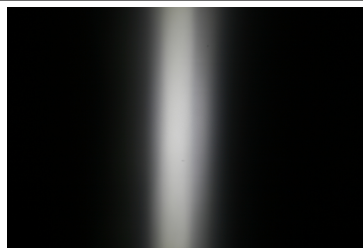
LED XB-D
FWHM 10.0 + 108.0°
Efficiency 93 %
Peak intensity 1.520 cd/lm
Required components:



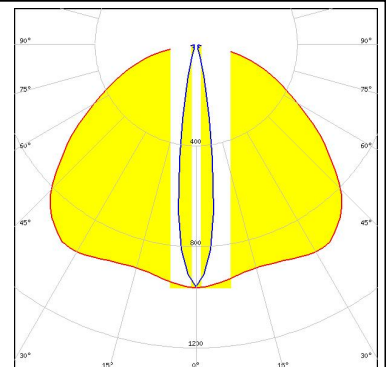
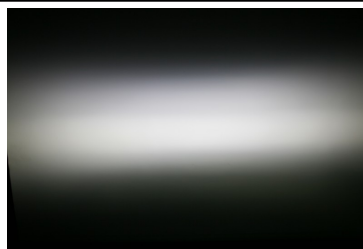
LED XP-E
FWHM 102.0 + 10.0°
Efficiency 93 %
Peak intensity 1.750 cd/lm
Required components:



LED XP-E2
FWHM 11.0 + 101.0°
Efficiency 94 %
Peak intensity 2.300 cd/lm
Required components:



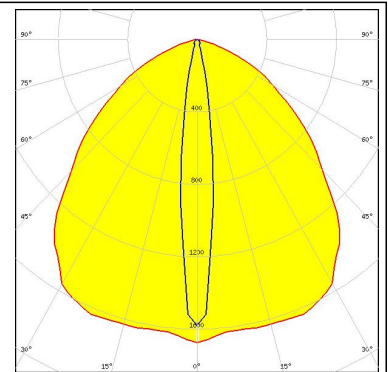
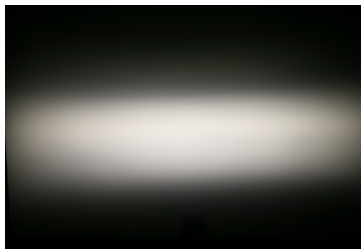
LED XP-G
FWHM 118.0 + 15.0°
Efficiency 93 %
Peak intensity 1.000 cd/lm
Required components:



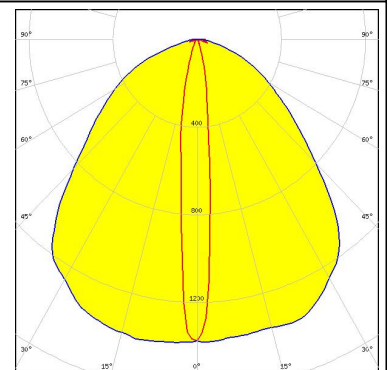
PHOTOMETRIC DATA (MEASURED):



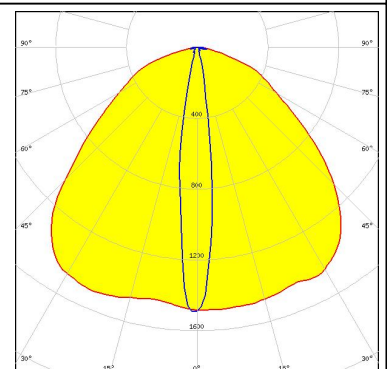
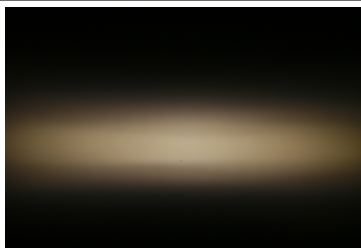
LED LUXEON Rebel
FWHM 101.0 + 14.0°
Efficiency 93 %
Peak intensity 1.700 cd/lm
Required components:



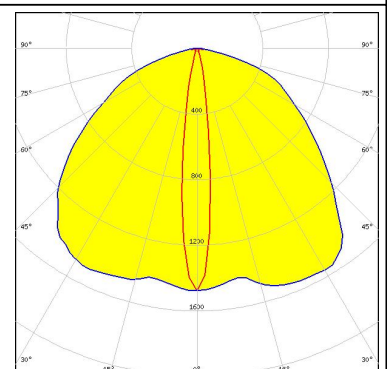
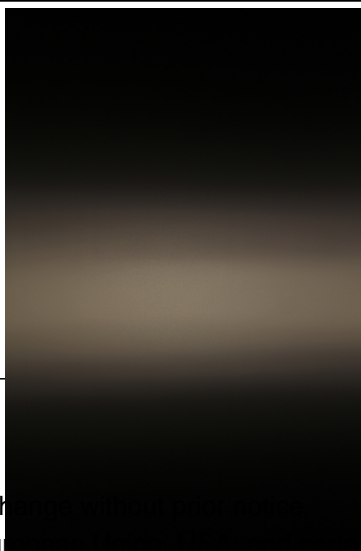
LED LUXEON Rebel ES
FWHM 12.0 + 104.0°
Efficiency 94 %
Peak intensity 1.370 cd/lm
Required components:



LED LUXEON T
FWHM 13.0 + 105.0°
Efficiency 93 %
Peak intensity 1.500 cd/lm
Required components:



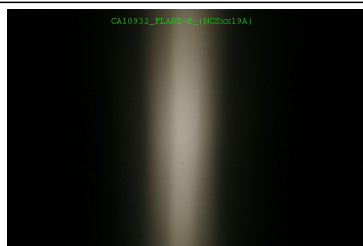
LED LUXEON TX
FWHM 14.0 + 114.0°
Efficiency 93 %
Peak intensity 1.600 cd/lm
Required components:



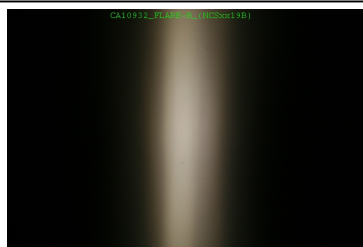
PHOTOMETRIC DATA (MEASURED):



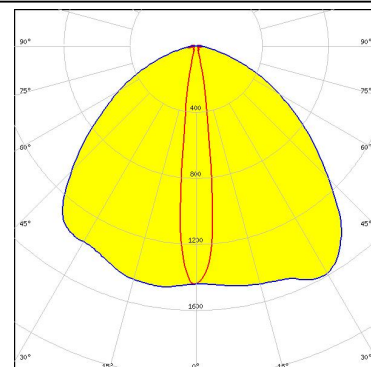
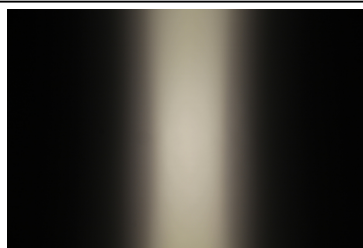
LED NCSxx19A
FWHM 9.0 + 88.0°
Efficiency 94 %
Peak intensity 2.040 cd/lm
Required components:



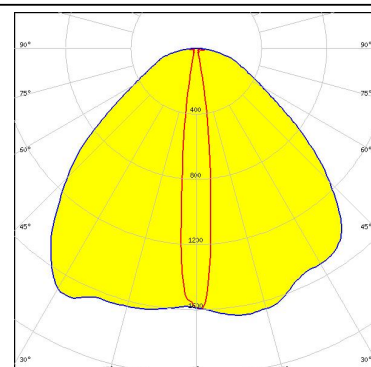
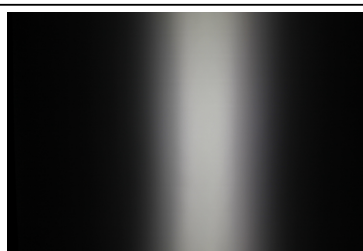
LED NCSxx19B
FWHM 11.0 + 103.0°
Efficiency 94 %
Peak intensity 1.850 cd/lm
Required components:



LED NVSxx19B/NVSxx19C
FWHM 14.0 + 110.0°
Efficiency 96 %
Peak intensity 1.600 cd/lm
Required components:



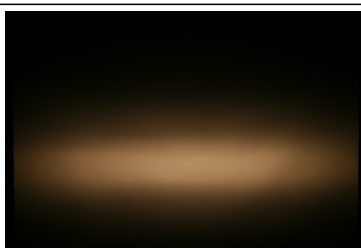
LED Oslon Square EC
FWHM 13.0 + 104.0°
Efficiency 94 %
Peak intensity 1.700 cd/lm
Required components:



PHOTOMETRIC DATA (MEASURED):

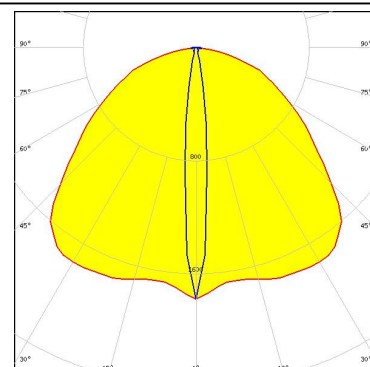
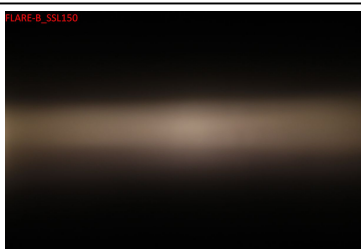
OSRAM
Opto Semiconductors

LED Oslon Square EC
FWHM 12.0 + 104.0°
Efficiency %
Peak intensity cd/lm
Required components:



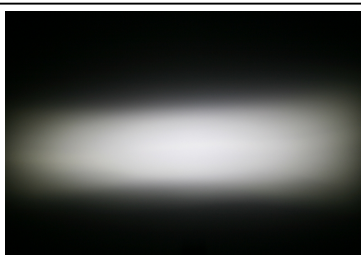
OSRAM
Opto Semiconductors

LED Oslon SSL 150
FWHM 9.0 + 117.0°
Efficiency 93 %
Peak intensity 1.600 cd/lm
Required components:



OSRAM
Opto Semiconductors

LED Oslon SSL 80
FWHM 83.0 + 11.0°
Efficiency 93 %
Peak intensity 2.200 cd/lm
Required components:



SEOUL
SEOUL SEMICONDUCTOR

LED Z5
FWHM 12.0 + 96.0°
Efficiency %
Peak intensity cd/lm
Required components:

PHOTOMETRIC DATA (MEASURED):

SHARP

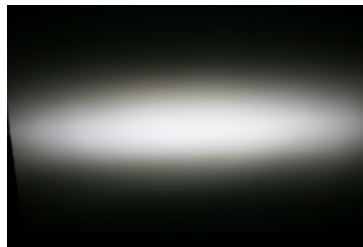
LED Double Dome (GM2BB)

FWHM 104.0 + 10.0°

Efficiency %

Peak intensity cd/lm

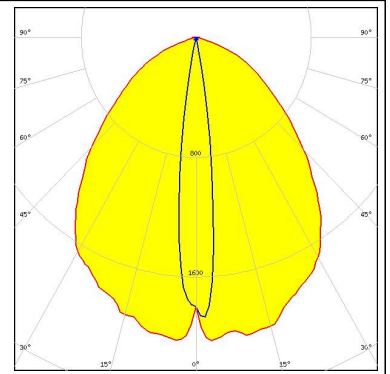
Required components:



PHOTOMETRIC DATA (SIMULATED):



LED LUXEON H50-2
FWHM 13.0 + 90.0°
Efficiency 95 %
Peak intensity 2.100 cd/lm
Required components:



GENERAL INFORMATION:

NOTE: The typical beam angle will be changed by different color, chip size and chip position tolerance. The typical total beam angle is the full angle measured where the luminous intensity is half of the peak value.

MATERIALS:

As part of our continuous research and improvement processes, and to ensure the best possible quality and availability of our products, LEDiL reserves the right to change material grades without notice.

PRODUCT DATA USER AGREEMENT AND DISCLAIMER:

The measured data in the provided downloadable LEDiL Product Datasheets and Mechanical 2D-Drawings is rounded and provided as reference for planning. LEDiL Oy's optical specifications have been verified by conducting performance testing of the products in accordance with the company's quality system. The reported data are averaged results of multiple measurements with typical variation. LEDiL Oy reserves the right to without prior notification make changes and improvements to its products.

LEDiL Oy assumes neither warranty, nor guarantee nor any other liability of any kind for the contents and correctness of the provided data. The provided data has been generated with highest diligence but the provided data may in reality not represent the complete possible variation range of all intrinsic parameters. Therefore, in certain cases a deviation from the provided data could occur.

LEDiL Oy reserves the right to undertake technical changes of its products without further notification which could lead to changes in the provided data. LEDiL Oy assumes no liability of any kind for the possible deviation from any provided data or any other damage resulting from the usage of the provided data.

The user agrees to this disclaimer and user agreement with the download or usage of the provided files.

LEDiL Oy

Joensuunkatu 13
FI-24240 SALO
Finland

LEDiL Inc.

228 West Page Street
Suite D
Sycamore IL 60178
USA

Local sales and technical support

[www.ledil.com/
where_to_buy](http://www.ledil.com/where_to_buy)

Shipping locations

Salo, Finland
Hong Kong, China

Distribution Partners

[www.ledil.com/
where_to_buy](http://www.ledil.com/where_to_buy)