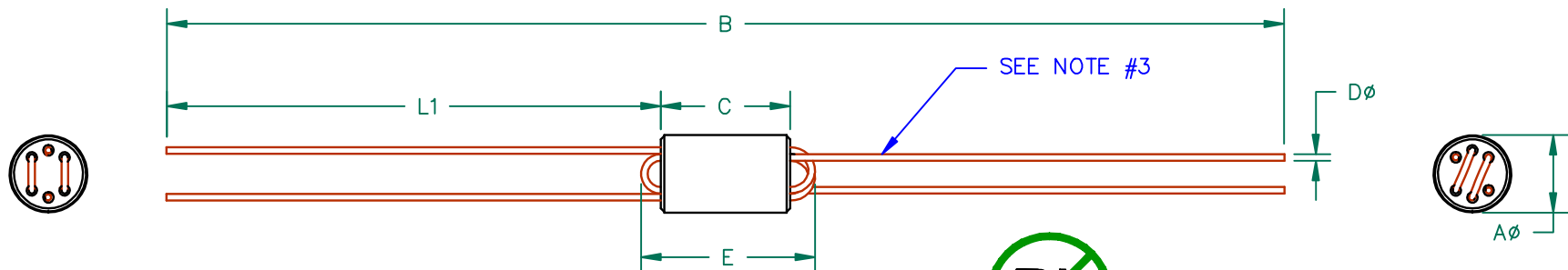
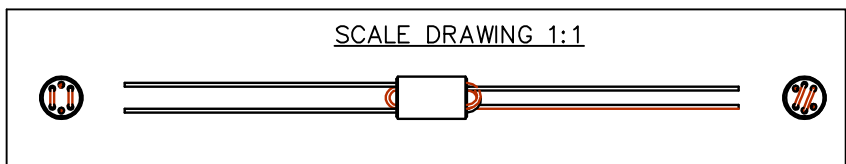


UNCONTROLLED DOCUMENT

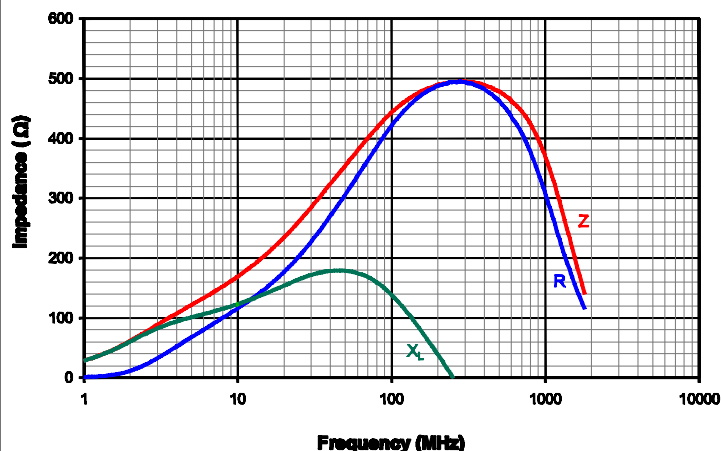
SCALE DRAWING 1:1



ELECTRICAL TESTING

TEST:	Z	Z
FREQUENCY	25 MHz	100 MHz
NOMINAL	281 Ω	460 Ω
MINIMUM	211 Ω	345 Ω
MAXIMUM	- Ω	- Ω

Z, R, X vs Frequency



NOTES:

1. WIRE: 2 X 1 1/2 TURNS COPPER 24 AWG 0.51 [.0201] DIAMETER.
2. PLATING: 100% TIN 5μ ± 2μ [200 μin ± 80 μin]
3. LEADS:
 - A. LEADS SOLDERABILITY CONFORMS TO MIL-STD-202F, METHOD 208F.
4. REF. STEWARD CORE P/N 28C0236-000.
5. WEIGHT/1000: 1.23 kgs [2.71 lbs]

DIMENSIONS:

A	6.00 [.236]	±	0.20 [.008]
B	86.46 [3.404]	±	3.18 [.125]
C	10.00 [.394]	±	0.25 [.010]
D	0.51 [.0201]	±	TYP.
E	14.61 [.575]	±	MAX.
L1	38.23 [1.505]	±	3.00 [.118]

DIMENSIONS ARE IN mm [INCHES].				This print is the property of Laird Tech. and is loaned in confidence subject to return upon request and with the understanding that no copies shall be made without the written consent of Laird Tech. All rights to design or invention are reserved.		Laird TECHNOLOGIES	
J	UPDATE COMPANY LOGO	12/16/08	JRK	PROJECT/PART NUMBER: 28C0236-0DW-10	REV J	PART TYPE: ASSEMBLY	DRAWN BY: DJB
H	UPDATE COMPANY LOGO	04/16/07	JRK				
G	CHG DIMS A & TOLS, ADD ROHS SYMB.	03/08/07	JRK	DATE: 08/06/90	SCALE: 2 : 1	MATERIAL: NiZN Ferrite	
F	CHG P/N TO -10, REV NOTE 2 & 5	10/16/03	TMB				
E	CORRECT DIM "C" FROM 7.70mm TO 10.00mm UPDATE Z SPECS	09/12/02	TMB	CAD # 28C0236-0DW-10-J	TOOL # C0236		
D	UPDATE PRINT FORMAT, UPDATE TOLS ADD Z, R, XL CURVE, UPDATE NOTES	02/20/02	TMB				
C	UPDATE PRINT FORMAT	01/08/99	DTR				
B	ADDED PART	02/01/94	JAZ				
REV	DESCRIPTION	DATE	INT				