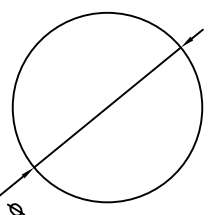
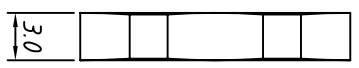
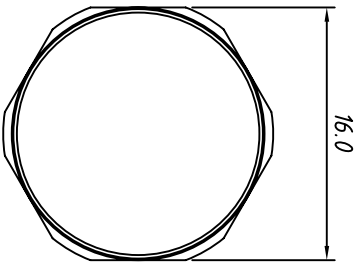


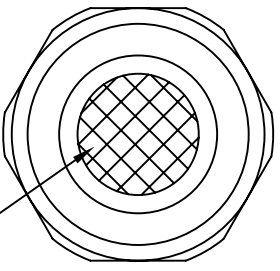
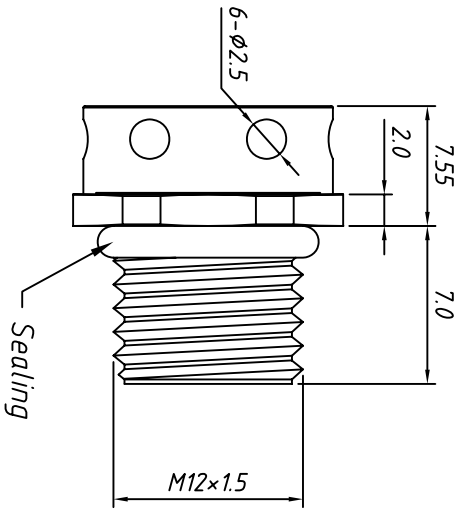
Nut



Panel Mounting
hole diameter



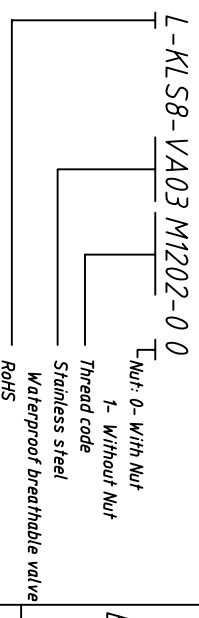
body




Film

- Material: Stainless steel
- Material: EPTFE
- Film: NBR, EPDM
- Sealing: IP67
- IP rating: M12x1.5
- Thread: M12x1.5
- Panel Mounting: -40 ° C ~ + 120 ° C
- Temp. Range: 350ml/minute Max.
- breathable valve Range: 8kgf.cm Max.
- Maximum torque:

Order Information



GENERAL TOLERANCE		ANGLE TOLERANCE		PROJECTION	
X. ±0.60	X. ±5°	XX ±0.25	mm	44	
X ±0.38	X ±3°				
XX ±0.25	XX ±2°				
Draw 2018-01-20	Check 2018-01-20				
SCALE		SHEET SIZE		A4	

Description:	KLS P/N:
M12x1.5 Stainless steel waterproof breathable valve	KLS8-VA03M1202-00
 NingBo KLS ELECTRONIC CO.,LTD.	