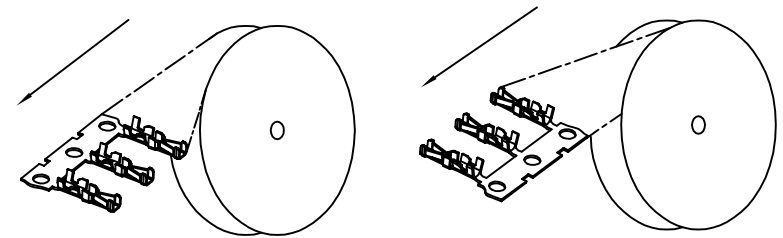
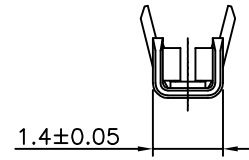
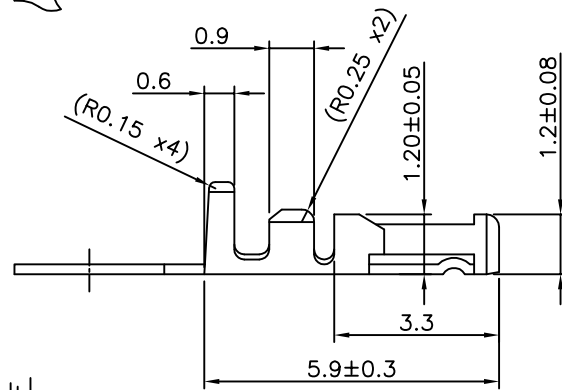
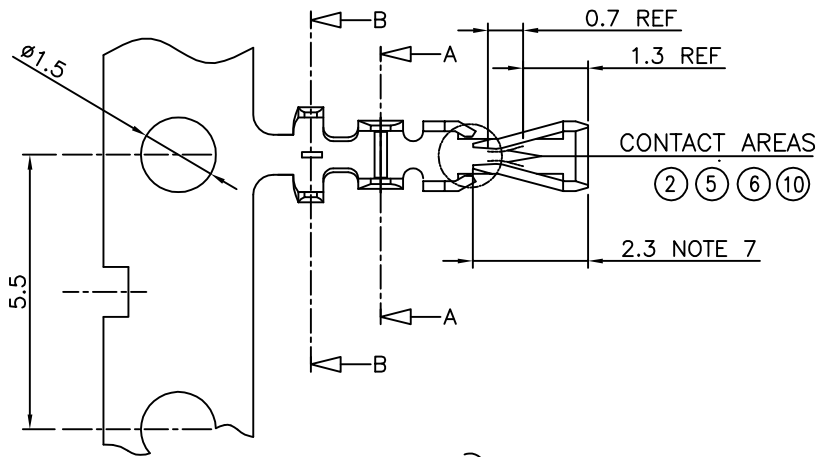


PRODUCT NO.	FINISH	REELING DIRECTION
77138-001LF	NOTE 2	FIG.1
77138-101LF	NOTE 6	FIG.1
77138-201LF	NOTE 5	FIG.1
77138-001RELF	NOTE 2	FIG.2
77138-101RELF	NOTE 6	FIG.2
77138-T01LF	NOTE 10	FIG.1



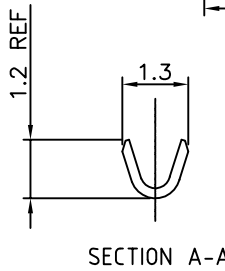
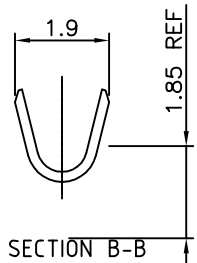
UNREELING DIRECTION
FIG.1

UNREELING DIRECTION
FIG.2



NOTES

- 1 MATERIAL : PHOSPHOR BRONZE
- ② FINISH : SELECTIVE GOLD PLATING 0.2μm MIN (CONTACT AREA) OVER 1.27μm Ni MIN
- 3 WIRE RANGE : AWG 26-30
- 4 GENERAL TOLERANCE : ±0.25
- ⑤ FINISH : SELECTIVE GOLD PLATING 0.5μm MIN (CONTACT AREA) OVER 1.27μm Ni MIN
- ⑥ FINISH : SELECTIVE GOLD PLATING 0.76μm MIN (CONTACT AREA) OVER 1.27μm Ni MIN
- 7 REMAINDER : - GOLD FLASH FOR ② ⑤ ⑥
- 2.0-5.0μm TIN FOR ⑩
- a- UNDERPLATING 1.27μm Ni MIN ALL OVER
- 8 THIS PRODUCT MEETS EUROPEAN UNION DIRECTIVES AND OTHER COUNTRY REGULATIONS AS DESCRIBED IN GS-22-008
- 9 CRIMP SPECIFICATION AS PER GS-20-058
- ⑩ FINISH : 2.0-5.0μm TIN ON CONTACT AREA. UNDERPLATING 1.27μm Ni MIN ALL OVER



mat'l. code		surface		tolerance		projection		product family	
SEE NOTES		ISO 1302		ISO 406 ISO 1101		mm		MINITEK	
ltr	ecn no	dr	date	tolerances unless otherwise specified		mm		title	
J	J07-0092	R.S	07.02.07	angles	.x ±0.25	mm		CTW MINITEK	
K	F08-0122	JCO	08.05.05	linear	.xx ±0.15	scale 5:1		AWG 26-30	
L	F08-0174	JCO	08.05.20		.xxx ±0.05			sheet 1 of 1	
M	F12-0004	JCO	12.01.04	dr	L.MULIN	08.01.28		size	
N	F12-0088	JCO	12.07.23	enfr	J.COMPAGNON	08.01.28		A3	
				chr				77138	
				appd	J.CO	08.05.05		type CUSTOMER Drawing	
sheet index	revision sheet								

Copyright FCI
FCIconnect.com