

CZL803KA



Main Application areas:

Details:

Capacity: 0.5-10t / 0.5-20Klb

FEATURES: Alloy steel structure; Glue sealing IP67

APPLICATIONS: Electronic platform scales, vehicle scales, railroad scales etc.

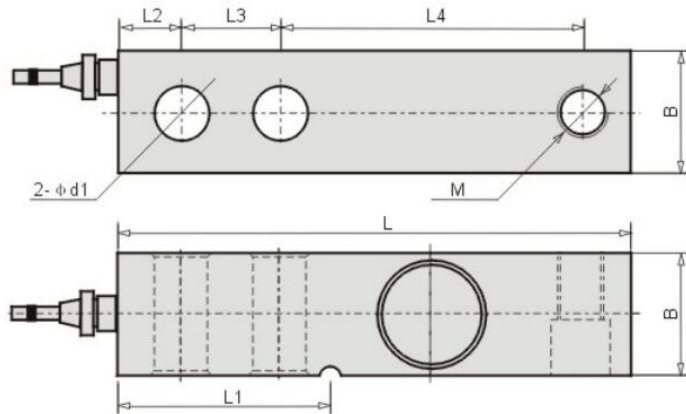
Range: 500,1000,2000,2500,5000,10000

Features: Sensor elastomer made of alloy steel; can provide welding seal; High-precision, high reliability.
Applications: Widely used in electronic scales, truck scales, to scales and other weighing force measuring equipment.

Technical Specifications:

Accuracy class: C2 / C3	Sensitivity Temperature Effect (% F.S / 10 ° C): $\pm 0.017 / \pm 0.011$
Combined error (% F.S): $\pm 0.03 / \pm 0.02$	Zero temperature effect (% F.S / 10 ° C): $\pm 0.029 / \pm 0.015$
Sensitivity (mv / v): 3.0 ± 0.003	Temperature compensation range (°C): -10 ~ +40
Creep (% F.S / 30 min): $\pm 0.023 / \pm 0.016$	Operating temperature (°C): -20 ~ +55
Zero point output (% F.S): ± 1.0	Excitation voltage (V): 9 ~ 12 (DC)
Input impedance (Ω): 350 ± 5	Safe overload range (% F.S): 150
Output impedance (Ω): 350 ± 3	Limit overload range (% F.S): 200
Insulation resistance (M Ω): ≥ 5000 (100VDC)	Protection level: IP66

Installation dimensions (mm):

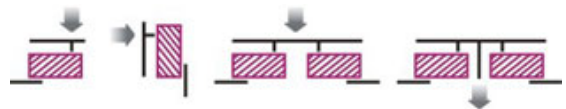


量程 (kg)	L	L1	L2	L3	L4	d	B	M
500-2000 1.5--4k1b	130	56.5	15.8	25.4	76.2	13.5	31.8	M16×2
2500-5000 5--15k1b	171.5	77.2	19.1	38.1	95.3	20	38.1	M20×2.5
10000 20k1b	222.3	101.6	25.4	50.8	120.7	26.2	50.8	M24×2

Wiring:

Red line: excitation (+) 111 green line: signal (+)
Black line: Incentive (-) 111 White line: Signal (-)

Note: The use of four-core shielded cable, the standard length of 3m, if there is a special need, according to customer requirements!



Force diagram:



Компания СЭА
Адрес: Украина, 02094, г. Киев, ул.Краковская, 13-Б
телефон: +38 (044) 291-00-41
e-mail: info@sea.com.ua