



Rugged Mobile Computing



Rugged
Tablet PCs



Rugged IoT
Handheld Devices

Intelligent Retail

Efficient Customer Service

The Internet of Things is revolutionizing how retailers engage with their customers and run their operations. Retailers that take the lead in IoT gain an important advantage in an already competitive environment. The IoT movement offers retailers new opportunities for growth in critical areas by improving customer experience, optimizing supply chain management and identifying new channels and revenue streams.



Better Mobility

- Compact, lightweight & easily portable
- Unique ambidextrous design for operation comfort



Expansion Flexibility

- Rich I/O expansion support
- Full accessories to expand the functionality as needed
- Vehicle docking and desktop cradle for power charging



IoT-ready Application

- Various vehicle identification devices (barcode scanners, RFID readers, NFC solutions)
- Microsoft Azure, IoT Cloud Solutions

Node-Watch Unified Cloud Service

Node-Watch is a unified management solution for connected devices. It adopts the most popular standard management protocols. Through the user-friendly online dashboard, you can find and track devices in real time. It also gives you a centralized view of all the managed devices.



Internet of Retail Solutions



Point-of Sale Terminal w/
Card Reader & Scanner



Mobile Rugged Tablet



Price Checker



Handheld Device



Incheon Airport Chooses ARBOR to Manage its Flight Information System

One of the busiest aviation hubs in Asia, Incheon Airport, used ARBOR's digital signage solutions to achieve greater durability and stability for both their flight information and baggage control systems. The flexibility of ARBOR's solutions allows Incheon Airport to provide quick and accurate flight information services for passengers, resulting in better customer satisfaction.



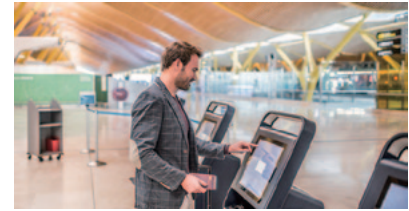
Retail Pharmacy Chain Stores

- Location: Korea & Taiwan
- Product & Service: G0830



Store Inventory Management

- Location: Europe
- Product & Service: G0975M / GT-500



Airport Customer Satisfaction Survey

- Location: Singapore
- Product & Service: M1014



Coffee Machine Kiosk

- Location: UK
- Product & Service: ASLAN-W922C



Supermarket Price Checker

- Location: Poland
- Product & Service: PC1015



Retail Warehouse Management

- Location: Europe & Taiwan
- Product & Service: G0975M / GT-500

Internet of Retail Solutions



High Performance 4K
Digital Signage Player



Kiosk & Interactive
Touch Panel



Entry-level Digital Signage
Player



IoT Cloud Management

Extreme Field Performance

GT-500 | Ultra-rugged Handheld Device



GT-500

Standard Model

GT-500-V

For North America
Verizon Network



GT-500-UHF (BT0)

With UHF RFID Reader

Features

- Quad-core ARM Cortex-A53 1.3GHz CPU
- Supports Android 7.0 operating system
- 5.2" TFT display with 5-point projected capacitive multi-touch
- Wi-Fi, Bluetooth 2G/3G/LTE and GPS supported
- Built-in 1D/2D barcode scanner and RFID/NFC reader
- Operating temperature: -15~55°C
- IP-67 certified, 1.5m (5ft.) drop resistance
- Gun handle pistol grip with integrated rechargeable 4800mAh battery (GT-500-UHF)
- UHF RFID reading range of up to 5 meters (GT-500-UHF)



IP67

Protection



1.5M

Drop-resistance



Anti-slip

Surface



Magnesium

Frame



Sunlight

Readable

Accessories



Pistol Grip

- Ergonomic design for comfortable grip
- Barcode trigger button
- Anti-slip rubber fringe adds friction



Vehicle Docking

- 3A/5V DC input
- Cigarette lighter power adapter
- Optional battery adapter provided



Better Ergonomics, Better Experience



Skid-proof Design Adding More Grip

The skid ridges on the sides and the bumps on the back add friction between the hand and the GT-500 to enhance the grip and protect the device from accidental drops and bumps.



Screw-free Battery Replacement

Just release the latch to open the battery compartment cover and move the red slider to remove the battery for replacement.



Human Factors Engineering

The rubber enclosure with ergonomic bevel edge ensures the GT-500 fits in hand comfortably.



Glove-Usable Multi-touch Screen

Facilitate error-free data entry even when wearing gloves.



Quick Release Hand Strap

Quick snap in to release the strap.

Desktop Cradle

- Micro-USB charging connector
- 2A/5V DC input
- Also fits GT-500 w/ pistol grip securely



Battery Charger

- 4-in-1 battery charger
- LEDs display charging status
- 75 cm drop resistance
- Overheat detection



Hand Strap

- Quick release design

Fully Equipped for Various Applications



Logistics & Distribution

By using the GT-500's data retrieval capabilities through Wi-Fi or 3G/4G networks, customers are able to streamline processes such as job assignments, reports logging and find-and-move operations.



Warehouse Management

Implementing the GT-500's barcode reader and wireless communication features in warehouse management can help accelerate receiving, shipping, as well as the picking and packing processes.



Mobile Ticketing

The lightweight GT-500 features a barcode scanner and a NFC reader, making it a perfect fit for event ticketing or mobile check-in. It gives mobile workers the tools they need to get the job done efficiently.



Public Safety

The GT-500 offers image capturing and 4G LTE capabilities. These aid police officials in collecting data on the move and keep them always-network-connected to be able to transfer evidence information or images to agencies in real-time.



Field Application

The GT-500 has a rugged MIL-STD 810G and IP-67 rated exterior to protect it from damage, making it durable enough for even the toughest worksites. Weighing only 385g (0.85lb) with the battery, it's highly portable for field applications.



Asset Tracking

Integrated with an UHF RFID reader module, the GT-500-UHF can read RFID labels over a distance of up to 5 meters. With the long range RFID reading capability, it can be adopted for applications such as asset tracking, inventory control and livestock management.

Enhancing Customer Experience

PC1015 | Price Checker



Features

- Quad-Core ARM Cortex-A7 CPU 1.3G Hz, Android-based
- 10.1" LCD display
- 10-point projected capacitive multi-touch
- H.265/HEVC video decode
- PoE connectivity (PD)

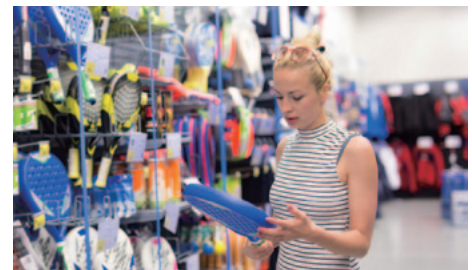


Better Engage Customers with the Multi-Functional PC1015

ARBOR's PC1015 was implemented in the stores of a Poland supermarket chain as the product & price information checking terminal. The compact PC1015 combines price checking and signage functions in one unit. It conveniently offers customers not only the price but also the full product information. By displaying promotion videos in regular intervals, retailers can also better engage their customers in the retail environment.

Implement PC1015 as an Informative Tool for Promoting Sales

A worldwide sports gear & equipment chain store selected to install ARBOR's PC1015 in their stores in Poland as their price checker. Utilizing the barcode scanner and miniature screen, customers can receive price and product information. They can also input their member ID to get coupons and other product discount information.



Build Your Own System

Customize your PC1015 via ARBOR's CTOS to meet your special needs:

- RFID & NFC module
- 1D barcode scanner
- 2D barcode scanner
- WLAN 802.11 b/g/n & Bluetooth 4.0 + BLE
- 2MP front-facing camera

Engage Business Anytime, Anywhere

Gladius GT78-V 7.85" Vehicle Mount Tablet



Durability

- MIL-STD-810G & IP-65 certified
- Raised bezel for LCD impact protection
- I/O ports with hinged rubber covers
- Corning® Gorilla® Glass 3 compliant touch screen which is resistant to scratches, drops and pressure

Reliable Connectivity

- 2G GSM/GPRS/EDGE, 3G WCDMA and LTE
- Dual SIM cards for dual network access providing optimal coverage
- Integrated Wi-Fi 802.11 a/b/g/n & Bluetooth 4.1

User-Friendly Design

- Multi-touch projected capacitive touch screen
- Customer replaceable battery with optimized battery life
- Suite of sensors including gyroscope, light sensor, M-Sensor/ E-Compass and G-sensor

Versatile Data Collection

- 2D barcode scanner with physical trigger button
- Rear 13MP AF camera and front 5MP camera
- NFC/RFID reader

Vehicle Application Ready

- Vehicle mount dock supporting cigarette power plug
- Active GPS module for route navigation



Fire Department in China Implements ARBOR GT78-V

Staff at the Beijing Fire Department needed to improve their inspection workflow by going paperless. ARBOR partnered with a system integrator to deliver a complete solution using GT78-V as the “paper and pen” replacement. The GT78-V’s generous screen size made the transition from a clipboard to a tablet painless. The integrated camera allowed for instant, detailed documentations of violations. With industry-leading

IP65 certification and MIL-STD-810G compliance, the GT-78V’s rugged features allowed firefighters to operate without fear of interruptions caused by hardware failures.

As records could be better managed electronically and because the quality of records is improved as a direct result, the GT78-V solution dramatically increased productivity of the fire department.

Enhance Logistics Efficiency for a LTL Freight Expert in the US

To work without paperwork to streamline work process, a LTL freight company in the US was seeking a solution to enhance their Proof of Delivery efficiency. Upon their request, ARBOR provides the GT78-V, the IoT tablet utilized for both as an in-vehicle HMI and as a portable rugged tablet to fit in one hand to meet drivers’ needs on the go.



The GT78-V Proof of Delivery solution eliminates paper-based processes and human errors so that consignment can be accurate and guaranteed. Each party including customers, drivers, and administrators, can get accurate data and synchronized information along with improved efficiency.

Accessories



Desktop Cradle

- Allows to use and charge the GT78-V at the same time
- LEDs indicating charging status



Vehicle Docking

- 3A/5V DC input
- Cigarette lighter power adapter
- Optional battery adapter provided



Battery Charger

- 4-in-1 battery charger
- LEDs to display the status
- LEDs indicating charging status
- Overheat detection



3-in-1 Holster

Enhancing Hospitality & Retailing Efficiency

Gladius G0830 | 8" Tablet POS



Features



- 8" TFT color LCD 1024 x 768 XGA resolution
- IPS LED display with projected capacitive multi-touch panel
- High mobility with connectivities including WLAN and Bluetooth
- Identification devices (barcode scanner, RFID & NFC reader and MSR)
- Combining the advantages of mPOS and fixed POS in a single solution
- Ergonomic-centered mechanical design
- Compact and sleek design



TAIWAN
EXCELLENCE
2017

mobility
for
business
Best Terminal Award

Accessories



Docking Cradle

- 3 x USB 2.0 ports
- 1 x RJ-45 GbE LAN port
- MSR and smart card reader
- NFC reader



Pistol Grip w/ Battery

- 8000mAh power bank
- Power status LED



K-Lock



Rope Stylus Pen



Vehicle Cradle

- Micro USB 5V DC In
- VESA 75 x 75 mm
- Shock & vibration tested



Pistol Grip



Hand Strap

Purpose-built Ergonomics



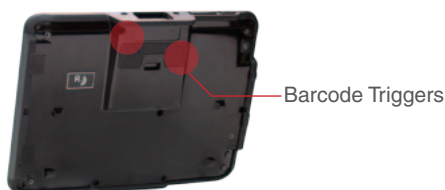
Sleek Look and Feel

The G0830 offers an aesthetically appealing design without compromising on functionality. Both the tablet and the docking cradle feature a sleek look and feel. Thus, making it a perfect fit for retail, hospitality and entertainment venues.



Lightweight

The ultra compact G0830 tablet PC weighs just 520 grams (1.15 lb) with the battery. It offers enterprise computing without compromising the sleek consumer style and feel. An optional hand strap is available to make it easier to carry and use on-the-go.



Ambidextrous Design

Barcode triggers on the G0830 are engineered to fit both right and left-handed users to offer a comfortable grip with less fatigue for long-hour operations.



Detachable Pistol Grip

The G0830 comes with an optional pistol-grip style barcode scanner for one-handed use. Its exceptional ergonomic design allows for a superior grip.

Moreover, it features a power bank (optional) for long hour operation. Power LED is also available to show power status.



Compact w/ Adjustable View Angle

The G0830's docking cradle comes with an ultra-compact design to save counter space and significantly reduce your POS device's footprint.

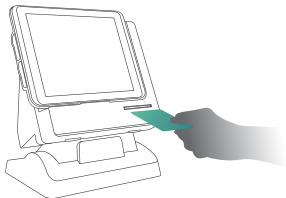
For optimized display, you can tilt the tablet screen for your desired view angle.

Ultimate Flexibility, Versatile Functionality

Multitude of Card Reading Capabilities

The G0830 tablet along with the cradle features a multitude of card reading capabilities including magnetic stripe card, smart card and NFC. Thus it can be used for member identification and maintenance in applications like self check-in, bonus redemption or personal information query.

Smart Card Reader



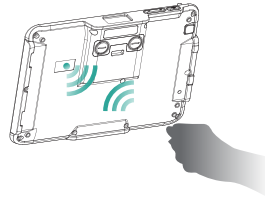
- ISO 7816
- Support EMV

MSR



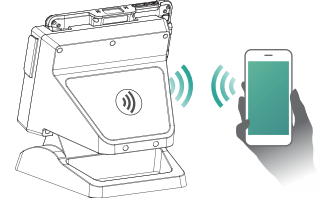
- ISO 78111-6

RFID/NFC

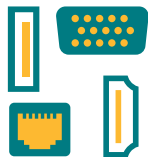


- ISO 15693, 14443A/B
- Felica, Mifare, Tag it
- NFCIP-1/2
- ST LRI 1K/M24LRXX

NFC



- ISO15693, 14443
- Felica, Mifare
- NFCIP-1, NFCIP-2



High Expansion Capability

Featuring rich I/O for peripheral connections, the cradle enables the G0830 to fulfill the needs of a wide range of applications.

ARBOR also offers a modular design to deliver customer-centric solutions and to maximize flexibility and expandability.



Dual OS Support

The G0830 fits both the conventional Windows-dominated POS market as well as the emerging Android market via Operating System and accessory support for both Windows 10 & Android v5.X.



Mobile Device Management Solution

Node-Watch is a unified management solution for connected devices, providing administrators a centralized view of all the managed devices. Through the user-friendly online dashboard, administrators can find and track the G0830 devices in real time.



In-Vehicle Ready

Utilizing the compact vehicle docking that support in-vehicle power, the G0830 can be quickly deployed into a vehicle for logistics and distribution applications.

ARBOR's Tablet POS Selected to Improve Operations and Service for Retail Pharmacy Chain Stores

The G0830 all-in-one POS PC has been chosen by one of the largest retail pharmacy chains in Asia to implement their inventory management, interactive kiosk and intelligent POS systems. The customer selected the G0830 for its versatility, durability, cost-efficiency and overall suitability for profitable operations and utmost superior customer service in complex retail environments.

A retail pharmacy is a complex retail business that not only provides prescription drugs, but also carries thousands of other products that include over-the-counter drugs, cosmetics, magazines, toys, groceries, electronics and more. As a POS system, the ARBOR G0830 allows quick product lookups and item updates at the touch of a button, allowing efficient real-time inventory management.



During peak shopping hours, the ARBOR mobile POS tablet helps processing checkout queues, thus reducing potential walkouts by impatient customers. The flexible system accepts NFC-based mobile payments, QR code coupons, and allows integration of peripherals such as MSR, RFID and Smart Card Readers for credit, debit, and membership cards. This adds convenience, guarantees quick and secure transaction processing, and boosts customer satisfaction.

In short, the ARBOR G0830 POS system provides maximum flexibility, minimal downtime, lower installation costs, optimal inventory management, and superior customer satisfaction.



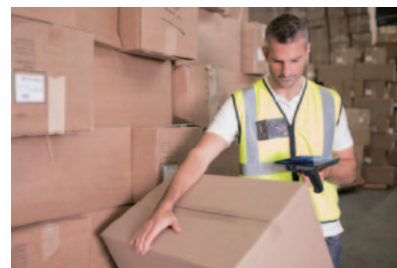
Retail/Hospitality

- Mobile Point-of-sale (mPOS)
- Inventory tracking
- Tableside ordering
- Self-service kiosk
- Customer membership management



Logistics

- Logistics and distribution
- Fleet management
- Fleet safety and driver monitoring



Warehousing

- Stock management
- Inventory process management
- Assets tracking

Ramp Up Your Mobile Workforce

Gladius G0975/G0975M 9.7 Rugged Tablet PC



G0975



G0975M

Features

- 9.7" XGA IPS LED display with projected capacitive touch
- High computing performance from Intel® Quad Core Celeron®
- Fully rugged for mobile POS or warehousing application
- Meeting MIL-STD-810G, IP65, 4 ft. drop resistance
- High mobility, multiple connectivity (Bluetooth/WLAN)
- Adopting multi-touch Screen with Corning® Gorilla® Glass
- Supporting external battery with battery cover and internal battery
- Providing four function keys and home key
- MIL-STD-810G, IP65, 1.2m(4ft.) drop resistance

G0975M

The G0975M delivers lightweight mobility with a weight of less than 1 kg. In addition, it features a membrane keypad to enhance speedy input.



Build Your Own System

With the G0975's CTOS (configure to order service), you can build your own system according to your specific needs required for different vertical markets.

For example, our mPOS module is tailored for retail application. It is designed to streamline your retail operations with everything from mobile POS tools to real-time sale/stock management.



mPOS Cradle

- 4 x USB 2.0, 2 x RS-232, 1 x Giga LAN, 1 x VGA and DC-IN
- Locking mechanism for theft deterrence
- VESA-75 & RAM-BALL mounting



A Taiwanese Retailer Selects G0975 to Improve Its Warehouse Management

A Taiwanese retailer was seeking a solution to improve their warehouse operations with a forklift-mounted rugged tablet. Reliability and wireless connectivity throughout their large warehouse were the main criteria. ARBOR's G0975 was selected due to its ruggedness, reliability, and rich I/O ports for external equipment integration.

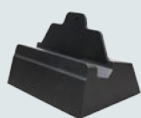
After implementing the G0975 on their forklifts, the forklift operators' productivity was greatly improved. Thanks to the uninterrupted wireless connectivity and the large 9.7" touch display, the operators can immediate access to stock information and item location. Timely movement of inventory is now possible. The operators can quickly receive a notification, search and move the goods and then report the finished task to the warehousing system. The result is faster processing speed, less data loss and overall greater efficiency.

G0975M Optimizes Inventory Management for a Multinational Retailer

A multinational food and shopping company in Asia outfitted its chain stores in Korea with ARBOR's G0975M to manage their merchandise inventory. Packed with features like a barcode scanner, wireless connectivity and a 9.7" multi-touch screen as the communication interface, the G0975M is a powerful GOT (graphic operation terminal) that enables the store associates to have the entire inventory at their fingertips. With inventory taking, ordering and forecasting efficiency greatly increased, the G0975M has been proven to deliver a quick return on investment.



Accessories



Desktop Cradle

- 4 x USB 2.0, 2 x RS-232, 1 x Giga LAN, 1 x VGA and DC-IN
- Allows to charge and use the device simultaneously
- Vibration and shock resistance



Vehicle Cradle

- 3 x USB 2.0, 1 x LAN, 1 x cigarette lighter socket, and DC-IN
- Locking mechanism for theft deterrence
- VESA-75 & RAM-BALL mounting
- Vibration and shock resistance



Hand Strap

Streamline Your Mobile Operations

Gladius G1052C/R 10.4" Rugged Tablet PC



Features

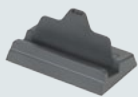
- 10.4" AFFS+ TFT Active Matrix with capacitive touch panel
- Ultra low power consumption
- Fully rugged for mobile POS or warehousing application
- Meeting MIL-STD-810G, IP54, 4 ft. drop resistance
- High mobility, multiple connectivity (Bluetooth/WLAN/WWAN)
- Identification devices (barcode scanner, RFID & NFC reader and MSR)
- Hot-swappable external battery w/ redundant internal battery
- 23-key keypad with numeric keys and function Keys
- I.P.A. (Isopropyl) alcohol clearing allowed

Build Your Own System

Customize your G1052 via ARBOR's CTOS (Configure to Order Service) to meet your special needs. The CTOS includes 1D/2D Barcode scanner / 3.75G HSUPA wireless kit / GPS and RS-232 2-in-1 kit / Smart Card Reader and RS-232 2-in-1 kit / 13.56MHz RFID & NFC kit / 5.0M rear CMOS camera kit and 4G LTE Wireless Kit



Accessories



Desktop Cradle

- 3 x USB 2.0, 1 x LAN and DC-IN
- Vibration and shock resistance
- Charge and use your device simultaneously



Battery Charger

- Charge two batteries simultaneously
- Vibration and shock resistance
- 19V/3.4A charger power input



Capacitive Touch Pen



Neck Strap



Hand Strap



Mount Bracket

Productivity On the Go

Gladius G1056 10.4" Rugged Tablet PC



Features

- AMD G-Series APU G-T56N dual-core 1.65GHz
- 10.4" AFFS+ TFT Active Matrix with resistive and digitizer touch screen
- Integrated 4GB DDR3-1333 memory and 32GB 1.8" SATA SSD drive
- Multi connectivities (WWAN, WLAN, Gigabit Ethernet, Bluetooth)
- Hot-swappable redundant dual batteries
- AMD Radeon HD 6320 with DirectX® 11, OpenGL™ 4.1 and OpenCL™ 1.1 support
- Optional 5.0MP front CMOS camera, RFID & NFC and 3.75 HSUPA wireless kits (CTOS)



Slip-free Grip Design

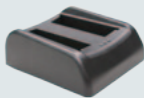
Featuring 1.8kg weight, hand strap and slip-free grip design, the G1056 is easy to carry around and use.



Excellent Graphic Computing

Featuring excellent graphic computing and VGA port and mini Displayport for HD TV display, the G1056 is perfect for engage with different multimedia application needs.

Accessories



Battery Charger

- Charge two batteries simultaneously
- Vibration and shock resistance
- 19V/3.4A charger power input



Wall-Mount Cradle

- 2 x USB 2.0, 1 x LAN and 1 x lockable DC-IN
- 1 x 3W internal speaker
- Dual-bay battery charger



Digitizer Stylus



Shoulder Strap

Selection Guide



Model	Gladius GT-500 (V)	Gladius GT-500-UHF	Gladius GT78-V	Gladius G0830	PC1015
Dimensions (WxHxD)	85 x 165.8 x 25.6 mm	91.5 x 201 x 156 mm	220 x 147 x 20.9 mm	208.5 x 150.6 x 27 mm	248 x 195.4 x 35 mm
CPU	MTK M6735 Cortex-A53 Quad Core 1.3GHz	MTK M6735 Cortex-A53 Quad Core 1.3GHz	Quad Core ARM Cortex-A53 1.3GHz	Intel® Atom™ x5-Z8350 Processor	ARM Quad-Core Cortex-A7 1.3GHz (SoC)
Graphics	-	-	-	Intel® HD Graphics	Mali400
Memory	2GB	2GB	3GB	2GB DDR3L	1GB DDR3L
Storage	16GB	16GB	16GB	64GB eMMC	8GB NAND Flash
Camera	1 x 2.0 MP (Front) 1 x 13.0 MP, AF (Rear)	1 x 2.0 MP (Front) 1 x 13.0 MP, AF (Rear)	1 x 5.0 MP (Front) 1 x 13.0 MP, AF (Rear)	1 x 2.0 MP (Front) 1 x 8.0 MP, AF (Rear)	1 x 2MP (Optional)
WLAN	802.11 a/b/g/n	802.11 a/b/g/n	802.11 a/b/g/n	802.11 a/b/g/n/ac	802.11 b/g/n*
Bluetooth	Bluetooth 4.1	Bluetooth 4.1	Bluetooth 4.1	Bluetooth 4.1	Bluetooth 4.0 LE*
WWAN	FDD-LTE / TD-LTE / WCDMA / TD-SCDMA / CDMA (1x+EVDO) / GSM / GPRS	FDD-LTE / TD-LTE / WCDMA / TD-SCDMA / CDMA (1x+EVDO) / GSM / GPRS	2G GSM/GPRS/EDGE 3G WCDMA LTE	-	*
GPS	Yes	Yes	Yes	Yes	-
LAN	-	-	-	1 x GbE (cradle)	1 x RJ-45 w/ POE
Audio	FM, 1 x Mic, 1 x Speaker, 1 x 3.5mm headphone jack	FM, 1 x Mic, 1 x Speaker, 1 x 3.5mm headphone jack	1 x Mic, 1 x Speaker, 1 x 3.5mm headphone jack	1 x Mic, 2 x Speakers, 1 x 3.5mm headphone jack	1 x Speaker
SD card slot	1 x microSD card slot	1 x microSD card slot	1 x microSD/SDHC	1 x microSD	1 x microSD/SDHC
Serial Port	-	-	-	-	-
Video Output	-	-	-	1 x HDMI 1.4 (cradle)	-
USB Port	1 x Micro USB 2.0	1 x Micro USB 2.0	1 x Micro USB 2.0	1 x Micro USB 2.0 (OTG) 3 x USB 2.0 (cradle)	1 x USB 2.0
Display Size/Type	5"	5"	7.85"	7.85"	10.1"
Max Resolution	1280 x 720	1280 x 720	1024 x 768	1024 x 768	1280 x 800
Touch Screen	Projected Capacitive 5-Point Multi-Touch	Projected Capacitive 5-Point Multi-Touch	Projected Capacitive 5-Point Multi-Touch	Projected Capacitive 10-Point Multi-Touch	Projected Capacitive 10-Point Multi-Touch
Power Adapter Input	100-240VAC	100-240VAC	100-240VAC	100-240VAC	100 ~ 240VAC
Power Adapter Output	DC 5V, 2A	DC 5V, 2A	DC 5V, 2A	DC 5V, 2A, 10W (Tablet) DC 12V. 5A. 60W (Cradle)	DC 12V, 5A
Battery	1 x 4800mAh	1 x ???mAh	1 x 6200mAh	1 x 4000mAh	-
Smart Card Reader	-	-	-	On cradle	-
Barcode scanner	2D*	2D*	2D	2D	1D* or 2D*
RFID & NFC	Yes	UHF RFID	Yes	On table & cradle	Yes
Stylus	-	-	-	Optional	-
Docking	Vehicle dock*	-	Vehicle dock*	Desktop cradle*	-
MSR	-	-	-	On cradle	-

*Optional



Model	Gladius G0975	Gladius G0975M	Gladius G1052C/R	Gladius G1056
Dimensions (WxHxD)	258 x 198 x 22.5 mm	260 x 200 x 30.6 mm	294 x 205 x 25 mm	266.8 x 257.7 x 67.7 mm
CPU	Intel® Celeron® Processor N2930 Quad-Core 1.83 GHz	Intel® Celeron® Processor N2930 Quad-Core 1.83 GHz	Intel® Celeron® Processor N2930 Quad-Core 1.83 GHz	AMD G-Series APU Dual-Core G-T56N 1.65GHz
Graphics	Intel® HD Graphics	Intel® HD Graphics	N/A/ Intel® HD Graphics	AMD A50M/ Radeon HD 6320
Memory	2GB DDR3L SO-DIMM	2GB DDR3L SO-DIMM	2GB DDR3L SO-DIMM	4GB DDR3 SO-DIMM
Storage	1 x 32GB MLC mSATA SSD	1 x 32GB MLC mSATA SSD	1 x 32GB MLC mSATA SSD	1 x 32GB 1.8" SATA SSD
Camera	1 x 5.0 MP	1 x 5.0 MP *	1 x 5.0 MP	1 x 5.0 MP, AF (Rear) 1 x 5.0 MP, AF (Front)*
WLAN	802.11 a/b/g/n	802.11 a/b/g/n	802.11 a/b/g/n	802.11 a/b/g/n
Bluetooth	Bluetooth 4.0 LE	Bluetooth 4.0 LE	Bluetooth 4.0 LE	Bluetooth 2.1 + EDR
WWAN	-	-	HSUPA/HSPA+/LTE*	HSUPA/HSPA+/LTE*
GPS	Y*	Y*	Y*	-
LAN	1 x RJ-45 (cradle)	1 x RJ-45 (cradle)	1 x RJ-45 (cradle)	1 x GbE
Audio	1 x Mic, 2 x Speakers, 1 x 3.5mm headphone jack	1 x Mic, 2 x Speakers, 1 x 3.5mm headphone jack	1 x Mic, 1 x Speaker, 1 x 3.5mm headphone jack	1 x Mic, 2 x Speakers, 1 x 3.5mm headphone jack
SD Card Slot	1 x microSD/SDHC/SDXC	1 x microSD/SDHC/SDXC	1 x SD/SDHC/SDXC	-
Serial Port	2 x RS-232 (cradle)	2 x RS-232 (cradle)	1 x RS-232*	1 x RS-232*
Video Output	1 x Mini HDMI 1.4 1 x VGA (cradle)	1 x Mini HDMI 1.4 1 x VGA (cradle)	-	1 x VGA, 1 x Mini Displayport
USB Port	1 x USB 3.0, 1 x micro USB 2.0 4 x USB 2.0 (cradle)	1 x USB 3.0, 1 x micro USB 2.0 4 x USB 2.0 (cradle)	1 x USB 3.0 3 x USB 2.0 (cradle)	4 x USB 2.0
Display Size/Type	9.7"	9.7"	10.4"	10.4"
Max Resolution	1024 x 768	1024 x 768	1024 x 768	1024 x 768
Touch Screen Type	Projected Capacitive 10-Point Multi-Touch	Projected Capacitive 10-Point Multi-Touch	Projected Capacitive 10-Point Multi-Touch	Analog Resistive touch
Power Adapter Input	100 ~ 240VAC	100 ~ 240VAC	100 ~ 240VAC	100 ~ 240VAC
Power Adapter Output	DC 19V, 3.42A, 65W	DC 19V, 3.42A, 65W	DC 19V, 3.42A, 65W	DC 19V, 4.74A, 90W
Battery	1 x 2270mAh, 1 x 2270mAh*	1 x 2270mAh	1 x 2500mAh, 1 x 1880mAh*	2 x 2500mAh
Optional				
Smart Card Reader	-	-	Y	-
Barcode scanner	Y	Y	Y	-
RFID & NFC	-	-	Y	Y
Stylus	-	-	Y	Y
Docking	Desktop cradle* / vehicle cradle*	Desktop cradle* / vehicle cradle*	Y	Y
MSR	Y	Y	Y	-

*Optional

Headquarters

ARBOR Technology Corp.

10F., No.700, Zhongzheng Rd., Zhonghe Dist., New Taipei City 235, Taiwan

Tel: +886 2 8226 9396

Fax: +886 2 8226 9398

sales@arbor.com.tw

The Americas

ARBOR Solution, Inc.

Tel: +1 408 452 8900

Fax: +1 408 452 8909

info1@arborsolution.com

China

ARBOR Shenzhen

Tel: +86 755 83438567

Fax: +86 755 83438597

infocn@arbor.com.tw

Asia-Pacific

ARBOR Taiwan

Tel: +886 2 82269396

Fax: +886 2 82269398

sales@arbor.com.tw

Europe

ARBOR France

Tel: +33 (0)1 55 63 90 87

Fax: +33 (0)1 81 50 00 29

info@arbor-france.com

ARBOR Nanjing

Tel: +86 25 83694872

Fax: +86 25 83694873-208

infocn@arbor.com.tw

ARBOR Korea

Tel: +82 028555840

Fax: +82 028555841

sales@arbor.com.tw

ARBOR UK

Tel: +44 1908 310100

Fax: +44 1908 310107

sales@arbor-uk.com

ARBOR Shanghai

Tel: +86 21 64287904

Fax: +86 21 64397795-188

infocn@arbor.com.tw

ARBOR Singapore

Tel: +65 6749 9926

Fax: +65 6749 9927

sales.inquiry@arbor.com.tw

ARBOR Italy

Tel: +39 011 19700011

Fax: +39 011 19700015

info@arboritalia.it

ARBOR Beijing

Tel: +86 10 82665810

Fax: +86 10 82665810-819

infocn@arbor.com.tw

ARBOR Australia

Tel: +61 3 8736 0300

Fax: +61 3 8736 0325

info@arboraust.com